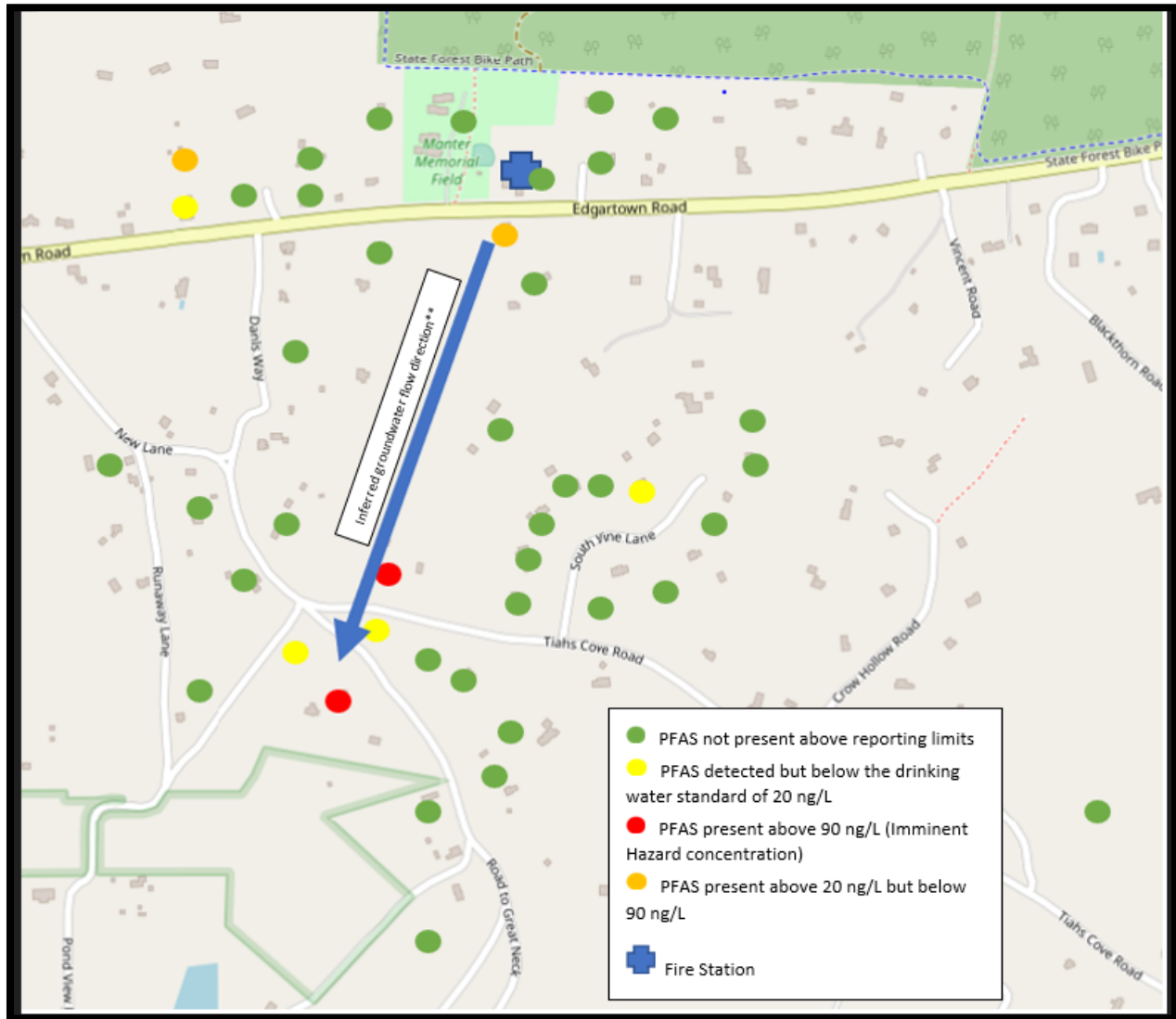


**DRAFT SUMMARY OF PFAS SAMPLING RESULTS - PRIVATE DRINKING WATER WELLS
WEST TISBURY, MASSACHUSETTS
MASSDEP INVESTIGATIONS AND UMASS PRIVATE WELLS SAMPLING PROGRAM
2021- 2022**



- Most data on this map represent samples obtained by MassDEP PFAS Branch staff. Some data was obtained from the MassDEP/UMASS sampling program where homeowners took their own samples.
- MassDEP inferred the groundwater flow direction based on the information available and not on subsurface evaluations. The consultant hired to complete the investigation in this area will be required to calculate groundwater flow direction.
- Some homeowners did not respond to MassDEP's requests for access to obtain samples.
- The mapped locations (green, yellow, red, and orange dots) are intended to provide a general visual representation of the data obtained, and thus, some data points may not be completely accurate.