



Waldron's Bottom Rd and Watcha Path

NHESP Significant Habitat shaded pale green

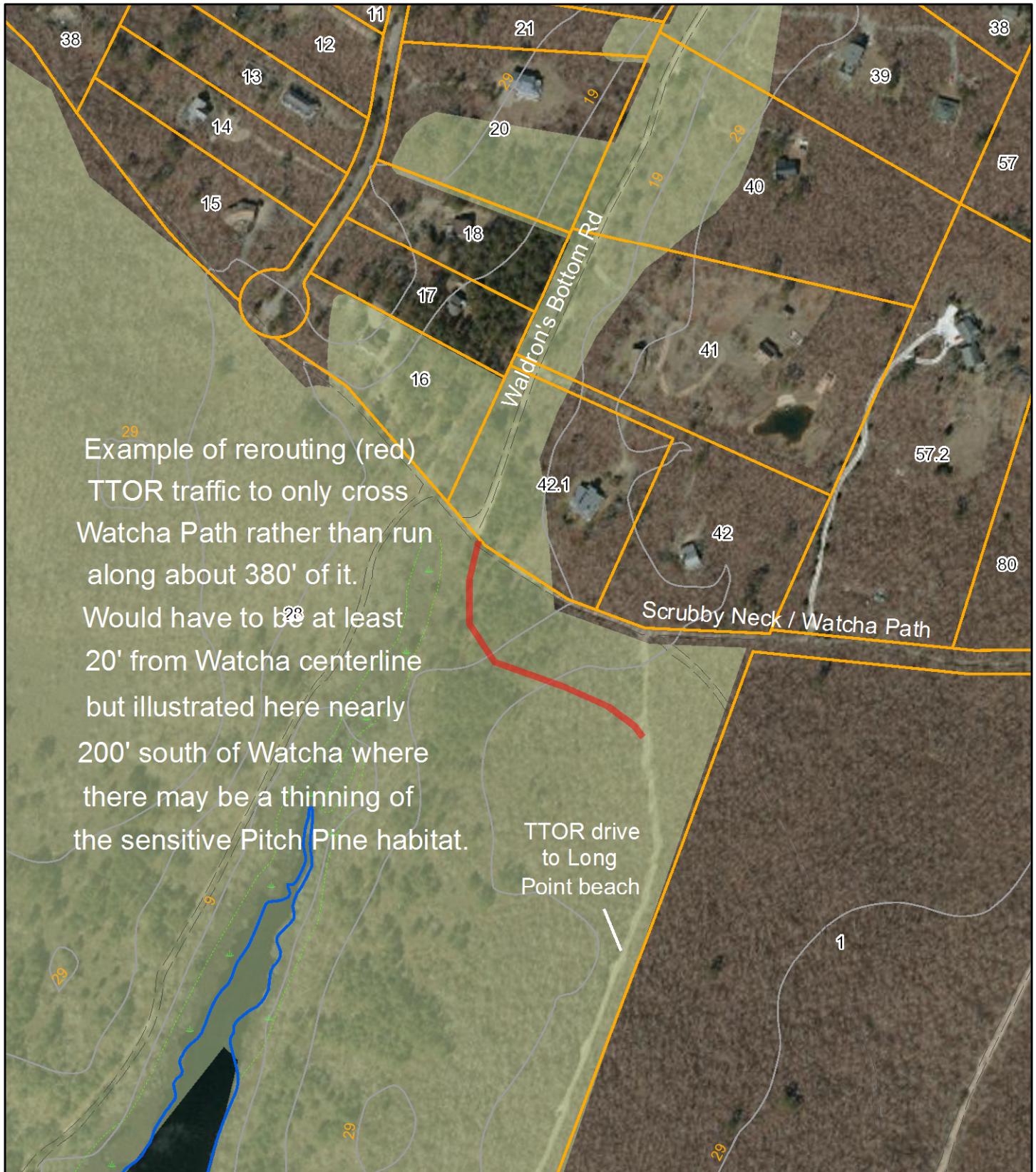


July 19, 2021

1 inch = 280 Feet



www.cai-tech.com



Example of rerouting (red) TTOR traffic to only cross Watcha Path rather than run along about 380' of it. Would have to be at least 20' from Watcha centerline but illustrated here nearly 200' south of Watcha where there may be a thinning of the sensitive Pitch Pine habitat.

TTOR drive to Long Point beach