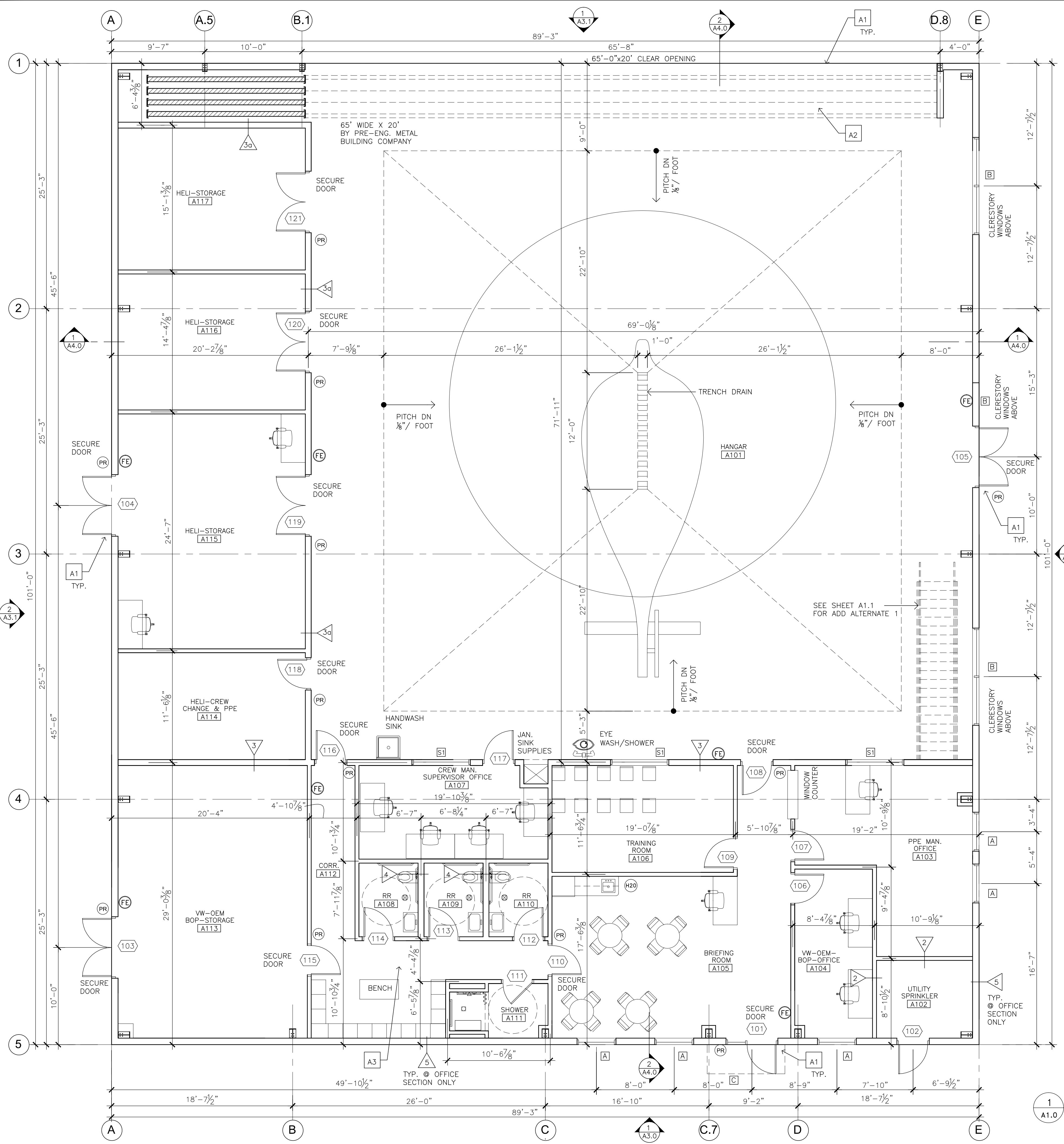


NO.	DATE	DESCRIPTION



WALL LEGEND

- NEW WALL CONSTRUCTION, SEE PLANS FOR LOCATIONS.
- WALL TYPE TAG. WALLS SHOULD BE 'TYPE 1', UNLESS OTHERWISE NOTED. SEE SHEET A1.1 FOR WALL TYPES.
- ROOM TAG, SEE FINISH SCHEDULE ON SHEET A6.0
- WINDOW TAG, SEE FINISH SCHEDULE ON SHEET A7.0
- FIRE EXTINGUISHER LOCATION, SEE GENERAL NOTE #2.
- DOOR TAG, SEE SCHEDULE SHEET A7.0
- PROXIMITY CARD READER
- NEW FLOOR DRAIN LOCATION, SEE PLUMBING DWGS.
- FREE STANDING WATER COOLER

- GENERAL NOTES**
- ALL NEW DOORFRAMES SHALL BE INSTALLED 4" FROM ADJACENT WALL, OR GREATER IF NOTED. 18" CLEAR SPACE MUST BE MAINTAINED ON THE PULL-SIDE OF DOOR.
 - FIRE EXTINGUISHER SHALL BE:
 - A. NFPA-10 PORTABLE FIRE EXTINGUISHER AND IS APPROVED ABC MULTI-PURPOSE DRY CHEMICAL TYPE.
 - B. MINIMUM OF 10 LB CAPACITY.
 - C. PROVIDE RECESSED CABINET, OFFICE SECTION ONLY) WITH BAKED ENAMEL FINISH AND SIGNAGE.
 - D. PROVIDE (-)
 - DIMENSION LINES ARE SHOWN FROM CENTERLINE TO CENTERLINE OF NEW PARTITION WALLS. DIMENSIONS FROM EXTERIOR ARE FROM EDGE OF FOUNDATION TO CENTERLINE OF NEW INTERIOR PARTITION, UNLESS NOTED OTHERWISE. DIMENSIONS SHOWN IN CORRIDORS ARE CLEAR DIMENSIONS.
 - ALL NEW EXPOSED (TO CIRCULATION) COUNTER AND WALL-CAP EDGES SHALL BE 3" RADIUS. ALL EXISTING EXPOSED COUNTER & WALL-CAP EDGES SHALL BE MODIFIED TO HAVE 3" RADIUS EDGES.
 - PROVIDE MOISTURE-RESIST. GYP. BOARD BEHIND ALL SINKS, COUNTERS, & RESTROOMS.
 - EQUIPMENT AND FURNITURE SHOWN IS SUPPLIED BY OWNER.

- KEYED NOTES (THIS DWG ONLY)**
- PROVIDE FLUSH TRANSITION BETWEEN EXTERIOR SIDEWALK AND INTERIOR SLAB AT ALL EXTERIOR DOORS.
 - COORDINATE LARGE DOOR SILL SLAB POUR AND REINFORCING IN THIS AREA WITH DOOR MANUFACTURER'S SUBMITTALS.
 - SEE ENLARGED RESTROOM DRAWINGS ON A5.0 FOR DETAILS.

1 FIRST FLOOR PLAN 9,014 SF.
A1.0 SCALE: 3/16" = 1'-0"