

- Notes:
1. Silt fence backed by snow fence.
  2. An on-site pre-construction meeting with the West contractor and a random fill dressed with 4" of topsoil to be allowed within the Buffer Zone.
  3. No stocking shall be allowed within the Buffer Zone.
  4. Site grading shall be allowed within the Buffer Zone.
  5. Wetlands delineated by Julie Fliske.
  6. Stone walls and edge of clearings taken from Col-East aerial survey.

**Plan Notes**

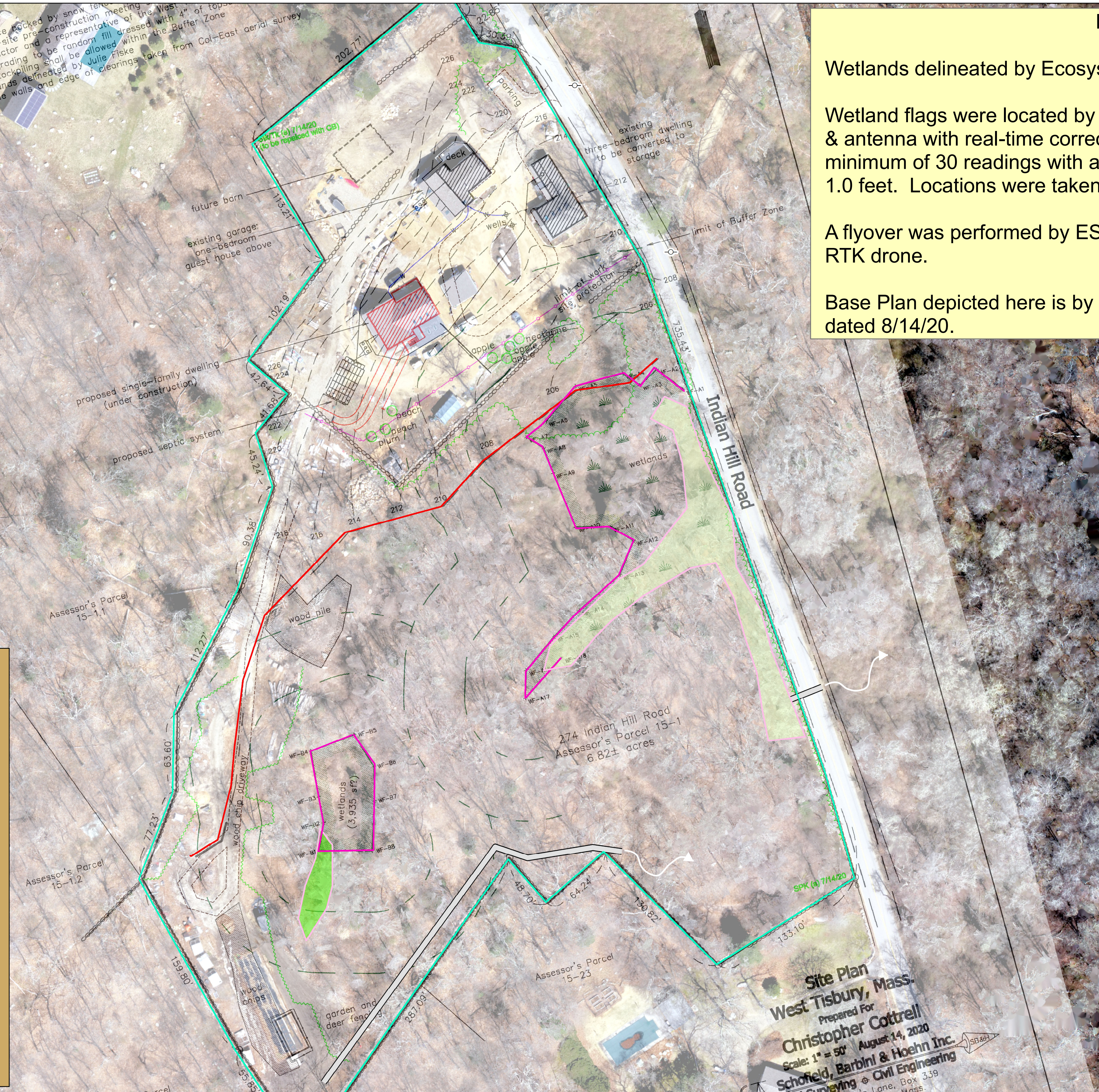
Wetlands delineated by Ecosystem Solutions, Inc. (ESI) on 04-02-23.

Wetland flags were located by ESI with Trimble Geo7X GPS with monopole & antenna with real-time corrections in centimeter mode set to a minimum of 30 readings with a minimum acceptable accuracy of 1.0 feet. Locations were taken on 04-02-23.

A flyover was performed by ESI on 04-02-23 with a DJI Phantom 4 RTK drone.

Base Plan depicted here is by Schofield, Barbini & Hoehn Inc. dated 8/14/20.

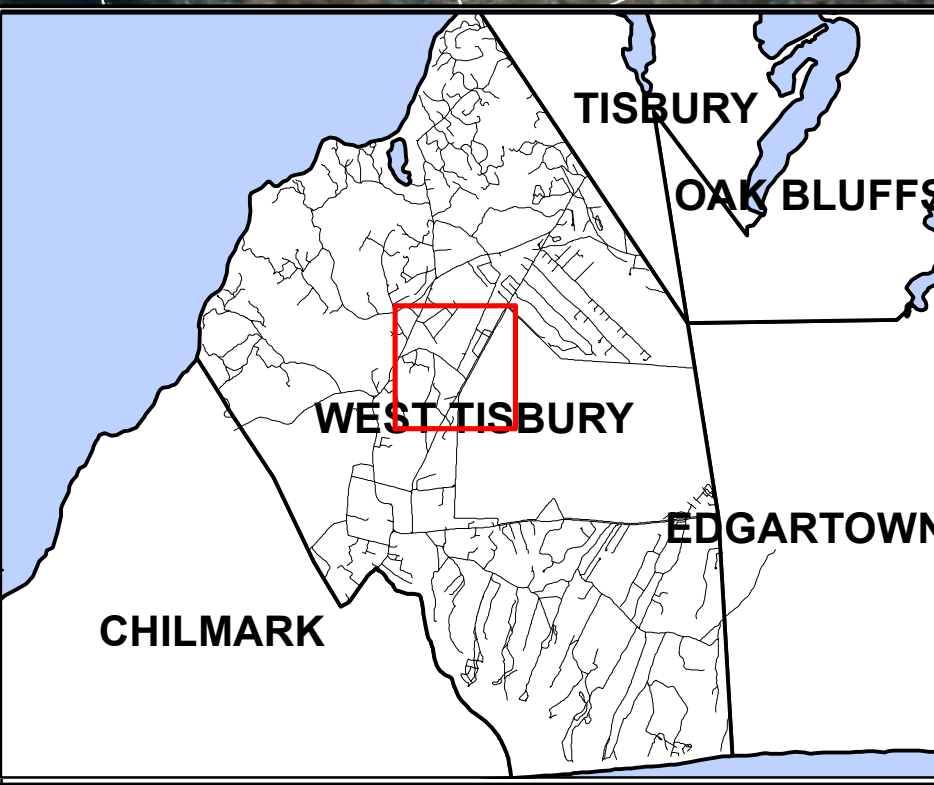
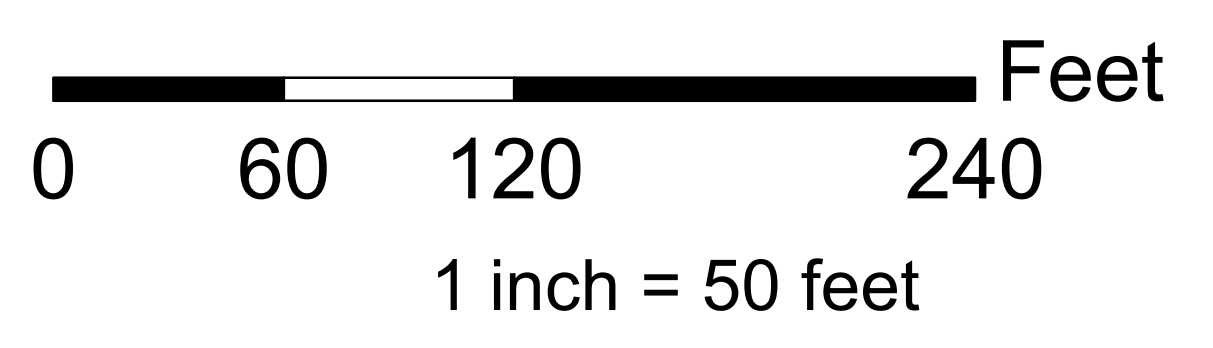
- 274 Indian Hill Rd.
- Original Wetland Boundary
- August 2020 Wetland Boundary
- 2023 Wetland Boundary
- 2023 Bordering Vegetated Wetland
- 2023 Isolated Vegetated Wetland
- Drain Pipe & Filter Fabric
- Culvert



**ES** ECOSYSTEM SOLUTIONS, INC.  
 100 CENTERVILLE RD., SUITE 4  
 WARWICK, RI 02886  
 TEL: 401-741-3263

**REVISIONS**

No.	Description	Date



**SHEET 2**



*Wetland Boundary Overlay Map  
 274 Indian Hill Road / Map 15, Lot 1  
 West Tisbury, Massachusetts*

DATE:	04-18-23
CREATED BY:	BF
BASE IMAGE:	04-2-23 Drone
PLAN REF:	N/A