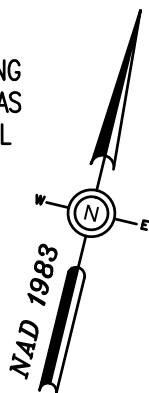


**NOTE:**

1. PARCEL DATA AND BUILDING FOOTPRINTS ARE SHOWN AS PROVIDED FROM MUNICIPAL GIS.



PID 25-1-2  
55 PANHANDLE RD  
N/F  
NATURE CONSERVANCY

4-6" CONDUIT  
CAST IN CONCRETE  
WITH 1-4/0CU GROUND  
TL= 200'±

2-6" CONDUIT  
CAST IN CONCRETE  
WITH 1-4/0CU GROUND  
TL= 55'±

UP 3/22

UP 3/21

MIDDLE ROAD

PANHANDLE ROAD

NEW 10314/010  
M1209 MH  
(5'X7'X6.5')

PID 32-21  
20 MIDDLE RD  
N/F  
SEBESTA LISA

PID 32-23  
164 MUSIC ST  
N/F  
MORGENTHAU ROBERT  
M & LUCINDA F

FOR CONTINUATION  
SEE PETITION PLAN  
FOR PANHANDLE ROAD

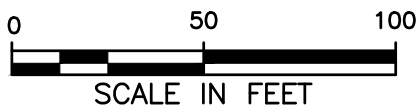
MUSIC STREET

**LEGEND**

- ⊕ Proposed Hand Hole
- ⊕ Existing Hand Hole
- Proposed Conduit
- - Existing Conduit
- Existing Pole
- Pole with Riser
- Ⓜ Proposed Multitap
- ⓐ Proposed Pullbox

**NOTE:**

PLAN TO ACCOMPANY PETITION OF EVERSOURCE ENERGY TO INSTALL ONE 5'X7'X6.5' MANHOLES AND 55' OF 2-6" CONDUIT AND 200' OF 4-6" CONDUIT FROM POLE #3/22 TO AT THE INTERSECTION OF MIDDLE ROAD/MUSIC STREET/PANHANDLE ROAD.



BY YOUR USE OF THE INFORMATION CONTAINED IN THIS MAP, YOU AGREE THAT NO WARRANTY OF ANY KIND, EXPRESS OR IMPLIED, IS GIVEN WITH RESPECT TO THE INFORMATION. NEITHER NSTAR ELECTRIC COMPANY, NSTAR GAS COMPANY NOR ITS PARENTS, AFFILIATES, OFFICERS, DIRECTORS, SHAREHOLDERS, EMPLOYEES OR AGENTS (COLLECTIVELY THE "NSTAR ENTITIES") SHALL BE LIABLE FOR ANY LOSS OR INJURY CAUSED IN WHOLE OR IN PART BY USE OF THIS INFORMATION OR IN RELIANCE UPON IT. TO THE MAXIMUM EXTENT ALLOWED BY LAW, YOU AGREE BY YOUR ACCEPTANCE OF THE INFORMATION TO RELEASE, INDEMNIFY AND HOLD THE NSTAR ENTITIES HARMLESS FROM ANY SUCH LOSS OR INJURY.

THE INFORMATION MAY NOT REPRESENT A SURVEY, MAY NOT BE THE MOST COMPLETE AND IS SUBJECT TO CHANGE WITHOUT NOTICE. NO LIABILITY IS ASSUMED FOR THE ACCURACY OF THE INFORMATION, EITHER EXPRESSED OR IMPLIED. UNAUTHORIZED ATTEMPTS TO MODIFY THE INFORMATION OR USE THE INFORMATION FOR OTHER THAN ITS INTENDED PURPOSES ARE PROHIBITED.

**MASS. LAW**

REQUIRES 72 HOURS ADVANCE NOTICE TO UTILITY COMPANIES BEFORE DIGGING BY ANYONE. CALL DIG-SAFE 1-888-344-7233

C#	
Ward #	
Work Order #	4480290
Surveyed by:	
Research by:	
Plotted by:	NITSCH
Proposed Structures:	
Approved:	
P#	

 1165 MASSACHUSETTS AVE. DORCHESTER, MASS. 02125	
Plan of	MIDDLE ROAD
	WEST TISBURY, MA
Showing	
Scale	1"=50'
Date	1/4/2021
SHEET	1 OF 3

**SUGGESTED WORK ZONE WARNING SIGN SPACING**

ROAD TYPE	DISTANCE BETWEEN SIGNS **		
	A	B	C
LOCAL OR LOW VOLUME ROADWAYS*	350 (100)	350 (100)	350 (100)
MOST OTHER ROADWAYS*	500 (150)	500 (150)	500 (150)
FREEWAYS AND EXPRESSWAYS*	1,000 (300)	1,500 (450)	2,640 (800)

Based on: Table 6C-1  
MUTCD LATEST EDITION

\* ROAD TYPE TO BE DETERMINED BY MASSDOT OFFICE OF TRANSPORTATION PLANNING.

\*\* DISTANCES ARE SHOWN IN FEET (METERS). THE COLUMN HEADINGS A, B, AND C ARE THE DIMENSIONS SHOWN IN THE DETAIL/ TYPICAL SETUP FIGURES. THE A DIMENSION IS THE DISTANCE FROM THE TRANSITION OR POINT OF RESTRICTION TO THE FIRST SIGN. THE B DIMENSION IS THE DISTANCE BETWEEN THE FIRST AND SECOND SIGNS. THE C DIMENSION IS THE DISTANCE BETWEEN THE SECOND AND THIRD SIGNS. (THE "THIRD" SIGN IS THE FIRST ONE TYPICALLY ENCOUNTERED BY A DRIVER APPROACHING A TEMPORARY TRAFFIC CONTROL (TTC) ZONE.)

THE "THIRD" SIGN ABOVE IS TYPICALLY REFERRED TO AS AN "ADVANCE WARNING" SIGN ON THE TTCP SETUPS. THESE ADVANCE WARNING SIGNS ARE LOCATED PRIOR TO THE PROJECT LIMITS ON ALL APPROACHES (i.e. THE W20-1 SERIES (ROAD WORK XX FT) SIGNS), AND USUALLY REMAIN FOR THE DURATION OF THE PROJECT. ADDITIONAL SIGNS (i.e. "RIGHT LANE CLOSED 1 MILE" AND "LEFT LANE CLOSED 1 MILE") HAVE BEEN SHOWN IN SOME FIGURES AS EXAMPLES OF REINFORCEMENT SIGN PLACEMENT BUT ARE USED IN RARE OCCASIONS.

THE FIRST AND SECOND WARNING SIGNS ABOVE ARE REFERRED TO AS THE OPERATIONAL (DAY-TO-DAY) WORK ZONE SIGNS AND MAY BE MOVED DEPENDING ON WHERE THE SPECIFIC ROADWAY WORK FOR THAT DAY IS LOCATED.

R2-10a SIGNS SHALL BE PLACED BETWEEN THE SECOND AND THIRD SIGNS AS DESCRIBED ABOVE.

R2-10a, R2-10e, AND W20-1 SERIES SIGNS ARE TO BE INCLUDED ON ALL DETAILS/TYPICAL SETUPS.

**FORMULAS FOR DETERMINING TAPER LENGTHS**

SPEED LIMIT (S)	TAPER LENGTH (L) FEET
40 MPH OR LESS	$L = \frac{WS^2}{60}$
45 MPH OR MORE	$L = WS$

WHERE: L = TAPER LENGTH IN FEET (METERS)

W = WIDTH OF OFFSET IN FEET (METERS)

S = POSTED SPEED LIMIT, OR OFF-PEAK 85TH-PERCENTILE SPEED PRIOR TO WORK STARTING, OR THE ANTICIPATED OPERATING SPEED IN MPH (KM/H)


Source: Table 6C-2 MUTCD LATEST EDITION

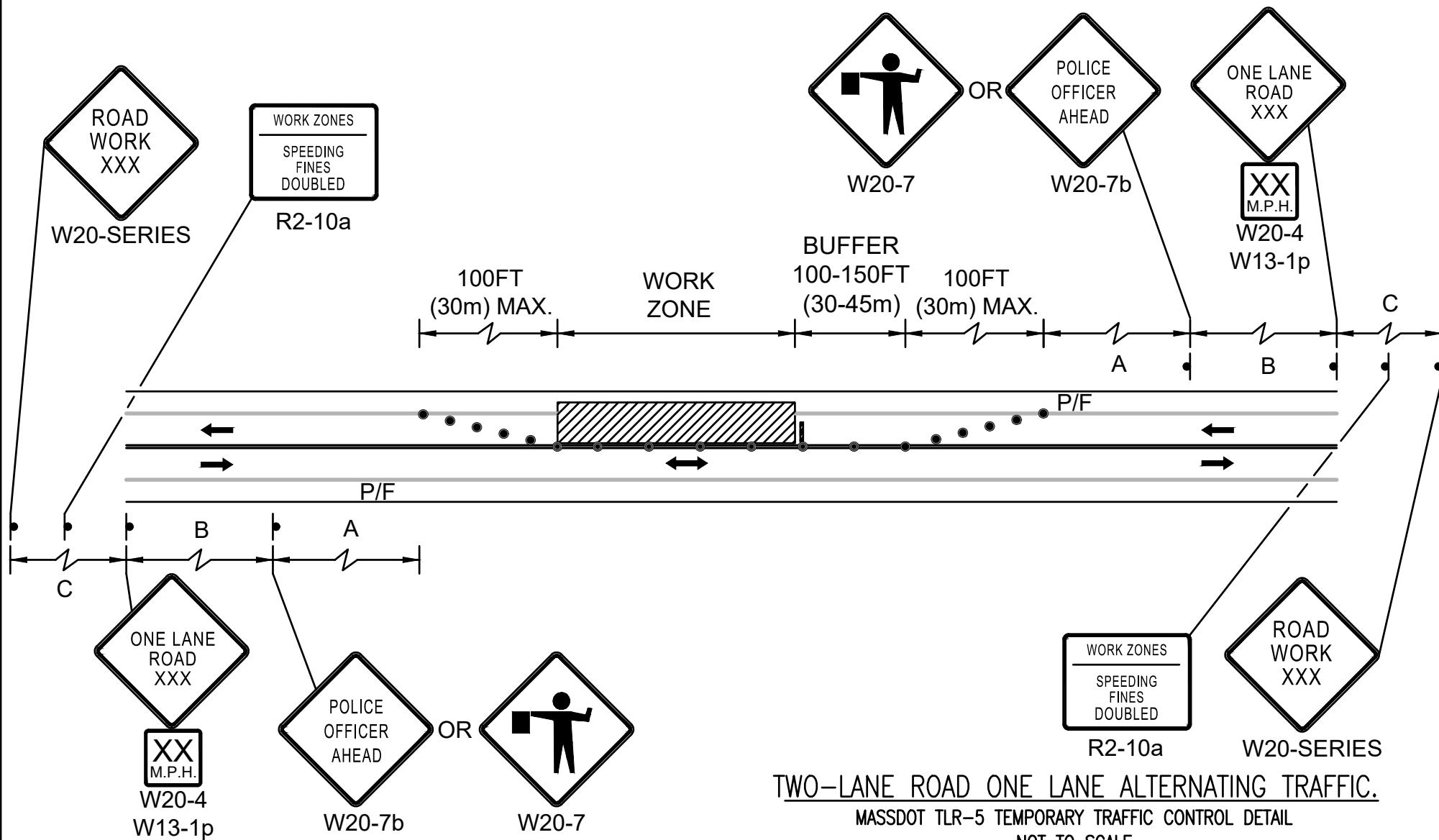
BY YOUR USE OF THE INFORMATION CONTAINED IN THIS MAP, YOU AGREE THAT NO WARRANTY OF ANY KIND, EXPRESS OR IMPLIED, IS GIVEN WITH RESPECT TO THE INFORMATION. NEITHER NSTAR ELECTRIC COMPANY, NSTAR GAS COMPANY NOR ITS PARENTS, AFFILIATES, OFFICERS, DIRECTORS, SHAREHOLDERS, EMPLOYEES OR AGENTS (COLLECTIVELY THE "NSTAR ENTITIES") SHALL BE LIABLE FOR ANY LOSS OR INJURY CAUSED IN WHOLE OR IN PART BY USE OF THIS INFORMATION OR IN RELIANCE UPON IT. TO THE MAXIMUM EXTENT ALLOWED BY LAW, YOU AGREE BY YOUR ACCEPTANCE OF THE INFORMATION TO RELEASE, INDEMNIFY AND HOLD THE NSTAR ENTITIES HARMLESS FROM ANY SUCH LOSS OR INJURY.

THE INFORMATION MAY NOT REPRESENT A SURVEY, MAY NOT BE THE MOST COMPLETE AND IS SUBJECT TO CHANGE WITHOUT NOTICE. NO LIABILITY IS ASSUMED FOR THE ACCURACY OF THE INFORMATION, EITHER EXPRESSED OR IMPLIED. UNAUTHORIZED ATTEMPTS TO MODIFY THE INFORMATION OR USE THE INFORMATION FOR OTHER THAN ITS INTENDED PURPOSES ARE PROHIBITED.

**MASS. LAW**

REQUIRES 72 HOURS ADVANCE NOTICE TO UTILITY COMPANIES BEFORE DIGGING BY ANYONE. CALL DIG-SAFE 1-888-344-7233

C#	 1165 MASSACHUSETTS AVE. DORCHESTER, MASS. 02125
Ward #	
Work Order # 4480290	Plan of MIDDLE ROAD
Surveyed by:	WEST TISBURY, MA
Research by:	Showing
Plotted by: NITSCH	
Proposed Structures:	
Approved:	Scale <span style="float: right;">Date 1/4/2021</span>
P#	SHEET 2 OF 3



**TWO-LANE ROAD ONE LANE ALTERNATING TRAFFIC.**

MASSDOT TLR-5 TEMPORARY TRAFFIC CONTROL DETAIL

NOT TO SCALE

BY YOUR USE OF THE INFORMATION CONTAINED IN THIS MAP, YOU AGREE THAT NO WARRANTY OF ANY KIND, EXPRESS OR IMPLIED, IS GIVEN WITH RESPECT TO THE INFORMATION. NEITHER NSTAR ELECTRIC COMPANY, NSTAR GAS COMPANY NOR ITS PARENTS, AFFILIATES, OFFICERS, DIRECTORS, SHAREHOLDERS, EMPLOYEES OR AGENTS (COLLECTIVELY THE "NSTAR ENTITIES") SHALL BE LIABLE FOR ANY LOSS OR INJURY CAUSED IN WHOLE OR IN PART BY USE OF THIS INFORMATION OR IN RELIANCE UPON IT. TO THE MAXIMUM EXTENT ALLOWED BY LAW, YOU AGREE BY YOUR ACCEPTANCE OF THE INFORMATION TO RELEASE, INDEMNIFY AND HOLD THE NSTAR ENTITIES HARMLESS FROM ANY SUCH LOSS OR INJURY.

THE INFORMATION MAY NOT REPRESENT A SURVEY, MAY NOT BE THE MOST COMPLETE AND IS SUBJECT TO CHANGE WITHOUT NOTICE. NO LIABILITY IS ASSUMED FOR THE ACCURACY OF THE INFORMATION, EITHER EXPRESSED OR IMPLIED. UNAUTHORIZED ATTEMPTS TO MODIFY THE INFORMATION OR USE THE INFORMATION FOR OTHER THAN ITS INTENDED PURPOSES ARE PROHIBITED.

**MASS. LAW**

REQUIRES 72 HOURS ADVANCE NOTICE TO UTILITY COMPANIES BEFORE DIGGING BY ANYONE. CALL DIG-SAFE 1-888-344-7233

C#	
Ward #	
Work Order #	<b>4480290</b>
Surveyed by:	Plan of <b>MIDDLE ROAD</b>
Research by:	<b>WEST TISBURY, MA</b>
Plotted by:	<b>NITSCH</b>
Proposed Structures:	Showing
Approved:	Scale
P#	Date <b>1/4/2021</b>
	SHEET <b>3 OF 3</b>

