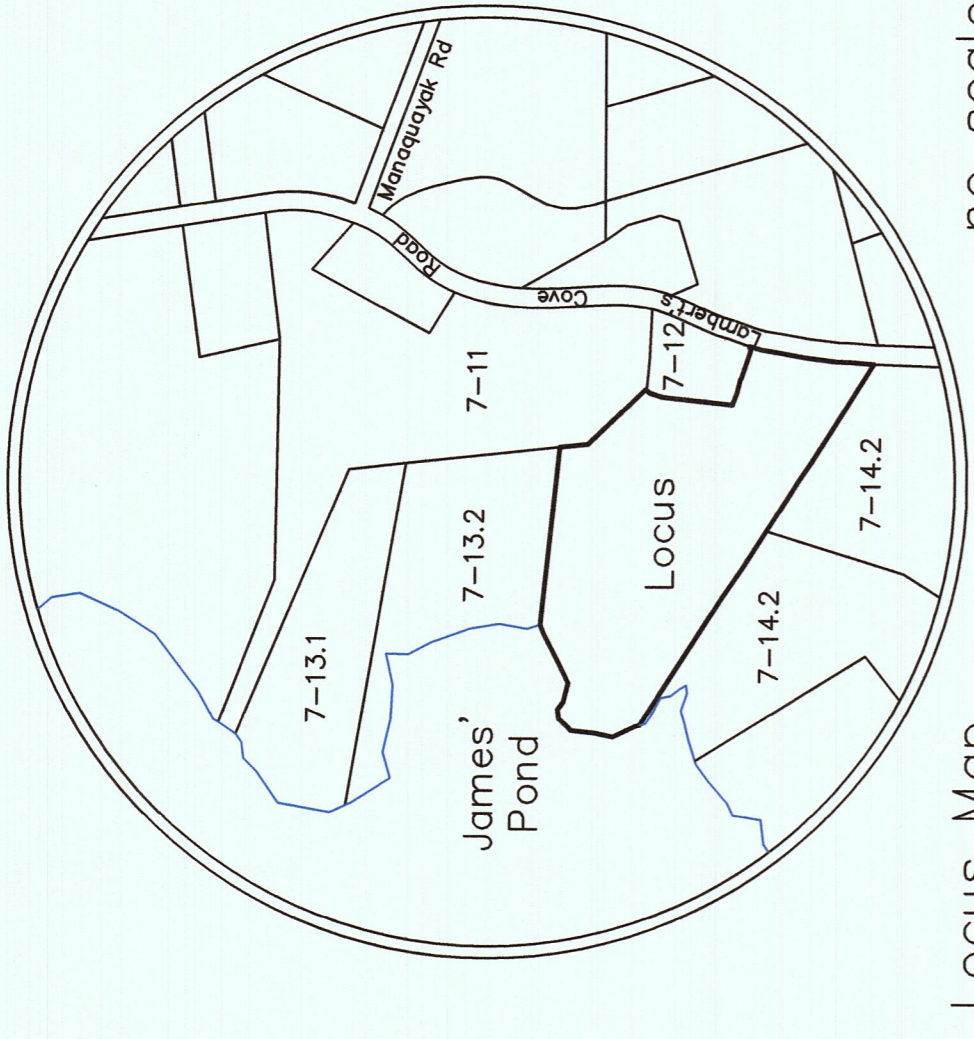
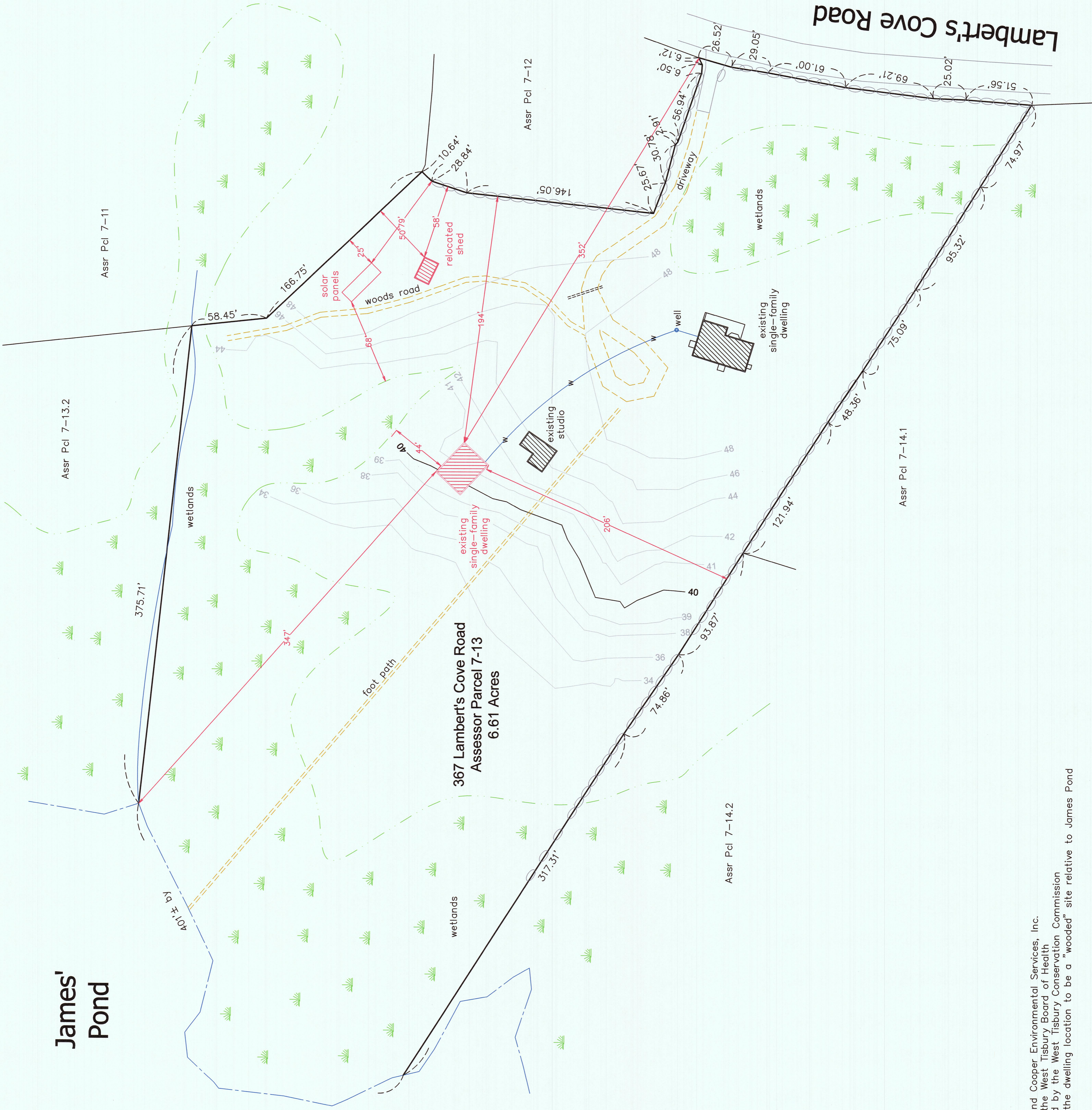


James'
Pond



Locus Map
no scale

Plan of Land in
West Tisbury, Mass.

Prepared For

Glenn Medowski

Scale: 1" = 40' August 19, 2020

Schofield, Barbini & Hoehn Inc.
Land Surveying & Civil Engineering
12 Surveyor's Lane, Box 339
Vineyard Haven, Mass.
508-693-2781
www.sbhinc.net
MV 7627 Con Com CoC Req.



- Notes:
- A. Wetlands delineated by Russell Walton and Cooper Environmental Services, Inc.
 - B. Septic system connection approved by the West Tisbury Board of Health
 - C. Dwelling construction has been approved by the West Tisbury Conservation Commission
 - D. Planning Board Site Review determined the dwelling location to be a "wooded" site relative to James Pond