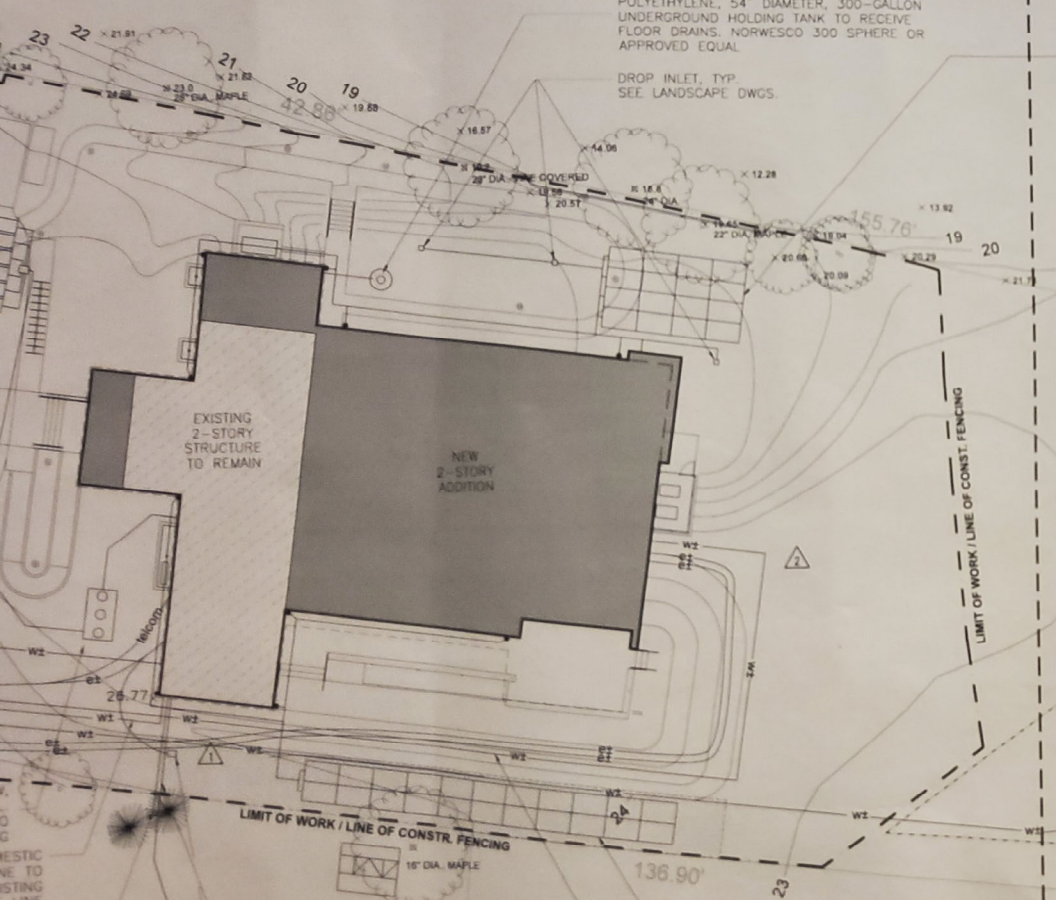


NEW H-20 LEACHING FIELD, SEE C2.1

POLYETHYLENE, 54" DIAMETER, 300-GALLON UNDERGROUND HOLDING TANK TO RECEIVE FLOOR DRAINS, NORWESCO 300 SPHERE OR APPROVED EQUAL

DROP INLET, TYP. SEE LANDSCAPE DWGS.

NEW SUBSURFACE DRAINAGE FIELD: (16) INFILTRATOR 3050 UNITS OR APPROVED EQUAL.



Sweet William Way

Factory Brook

Factory Brook

LIMIT OF WORK / LINE OF CONSTR. FENCING

LIMIT OF WORK / LINE OF CONSTR. FENCING

NEW, 2" DOMESTIC WATER LINE FROM EXISTING PUBLIC SUPPLY WELL. TIE-IN TO EXIST. 2" LINE AT LIMIT OF WORK; EXTEND TO NEW WATER SERVICE ROOM, SEE P0.0 AND P1.1

NEW SUBSURFACE DRAINAGE FIELD: (22) INFILTRATOR 3050 UNITS, OR APPROVED EQUAL.

EXIST. FIRE WATER LINE TO REMAIN IN PLACE

FIRE WATER SUPPLY LINE, CENTER OF PIPE ELEV. +16.0, V.I.F. MAINTAIN 60" MIN. SOIL COVERAGE ALONG ENTIRE LENGTH OF PIPE, INSTALLED BY FP CONTRACTOR

West Tisbury Assessors Parcel

DOMESTIC TO FIELD
OM WATER
OF WORK
ECTION TO
OF WEST
TISBURY

ULL BOX
ION AND
CTION WITH
MINIMIZE
S AND