

# James Pond Preserve - Wetland Resource Map



Sources: Office of Geographic and Environmental Information (MassGIS) Commonwealth of Massachusetts Executive Office of Environmental Affairs; Aerial USGS Ortho Imagery 2019; Zoning districts from Town of West Tisbury, MV Commission 2017; Coordinate Reference: State Plane, Mass Mainland, Meters, NAD83

Note: Map prepared by the Martha's Vineyard land bank for planning purposes only. The land bank is not responsible for end-users' interpretation of the map.

**Wetland resource areas delineated using Data Checklist for the Delineation of Resource Areas (2017) and Massachusetts Handbook for Delineation of Bordering Vegetated Wetlands (2022): BVW data forms attached**







# James Pond Preserve - Wetland Resource, Buffer, Restriction Zone Map Management Areas



	Boat slide
	Viewing platform
	Bench
	well-house
	Oriental bittersweet treatment
	Native grassland restoration
	Dune restoration
	Convert to savanna
	50' No Build Zone
	25' No Disturb Zone
	BVW
	Barrier Beach
	Primary Frontal Dune
	Dune 100' Buffer/Resource
	BVW 100' Buffer/Resource

Sources: Office of Geographic and Environmental Information (MassGIS) Commonwealth of Massachusetts Executive Office of Environmental Affairs; Aerial USGS Ortho Imagery 2019; Zoning districts from Town of West Tisbury, MV Commission 2017; Coordinate Reference: State Plane, Mass Mainland, Meters, NAD83

Note: Map prepared by the Martha's Vineyard land bank for planning purposes only. The land bank is not responsible for end-users' interpretation of the map.

Wetland resource areas delineated using Data Checklist for the Delineation of Resource Areas (2017) and Massachusetts Handbook for Delineation of Bordering Vegetated Wetlands (2022)



# James Pond Preserve - NFHL Trail Planning and Management Areas



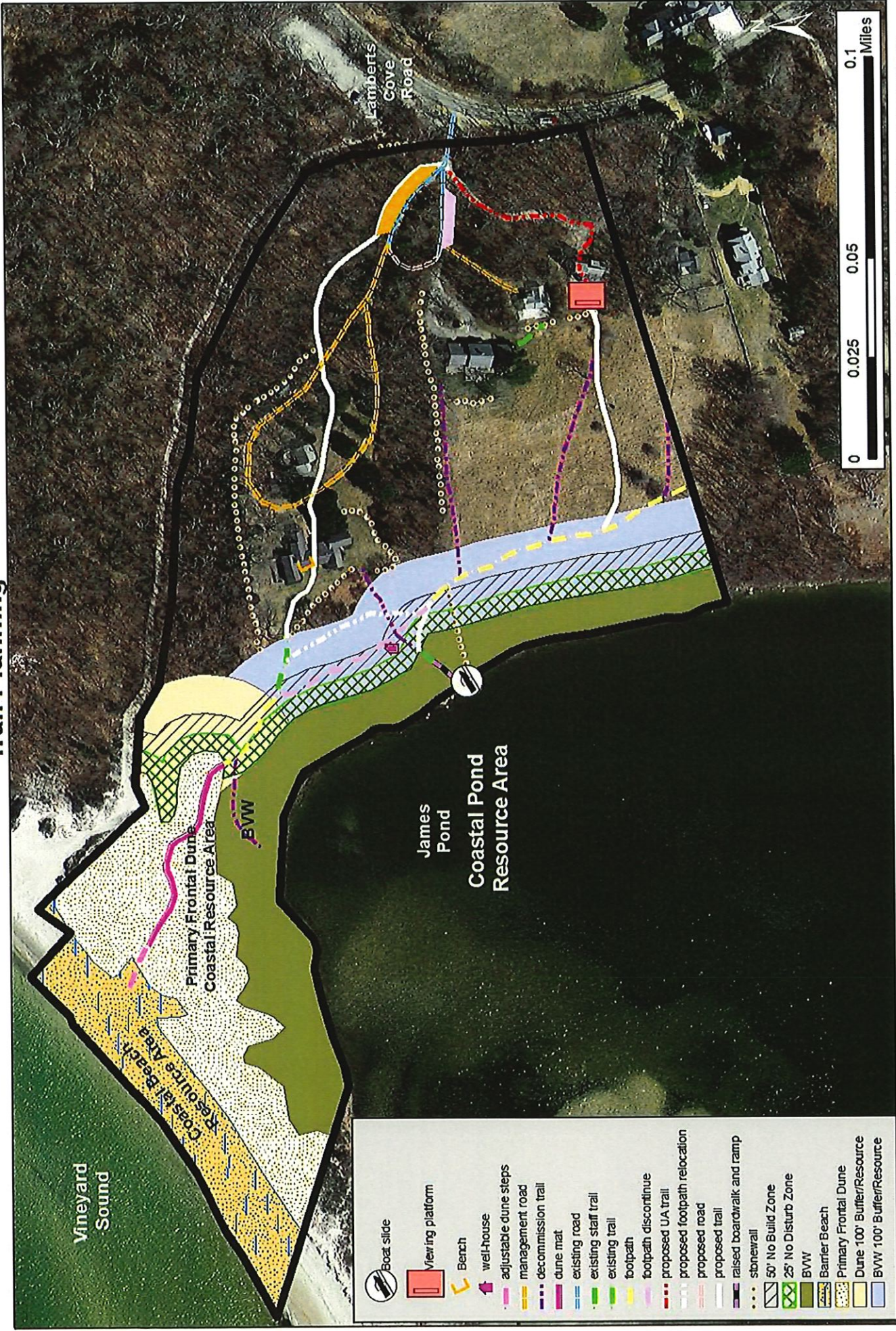
Sources: Office of Geographic and Environmental Information (MassGIS) Commonwealth of Massachusetts Executive Office of Environmental Affairs; Aerial USGS Ortho Imagery 2019; Zoning districts from Town of West Tisbury, MV Commission 2017; Coordinate Reference: State Plane, Mass Mainland, Meters, NAD83

Note: Map prepared by the Martha's Vineyard land bank for planning purposes only. The land bank is not responsible for end-users' interpretation of the map.

**Wetland resource areas delineated using Data Checklist for the Delineation of Resource Areas (2017) and Massachusetts Handbook for Delineation of Bordering Vegetated Wetlands (2022)**



# James Pond Preserve - Wetland Resource, Buffer, Restriction Zone Map Trail Planning



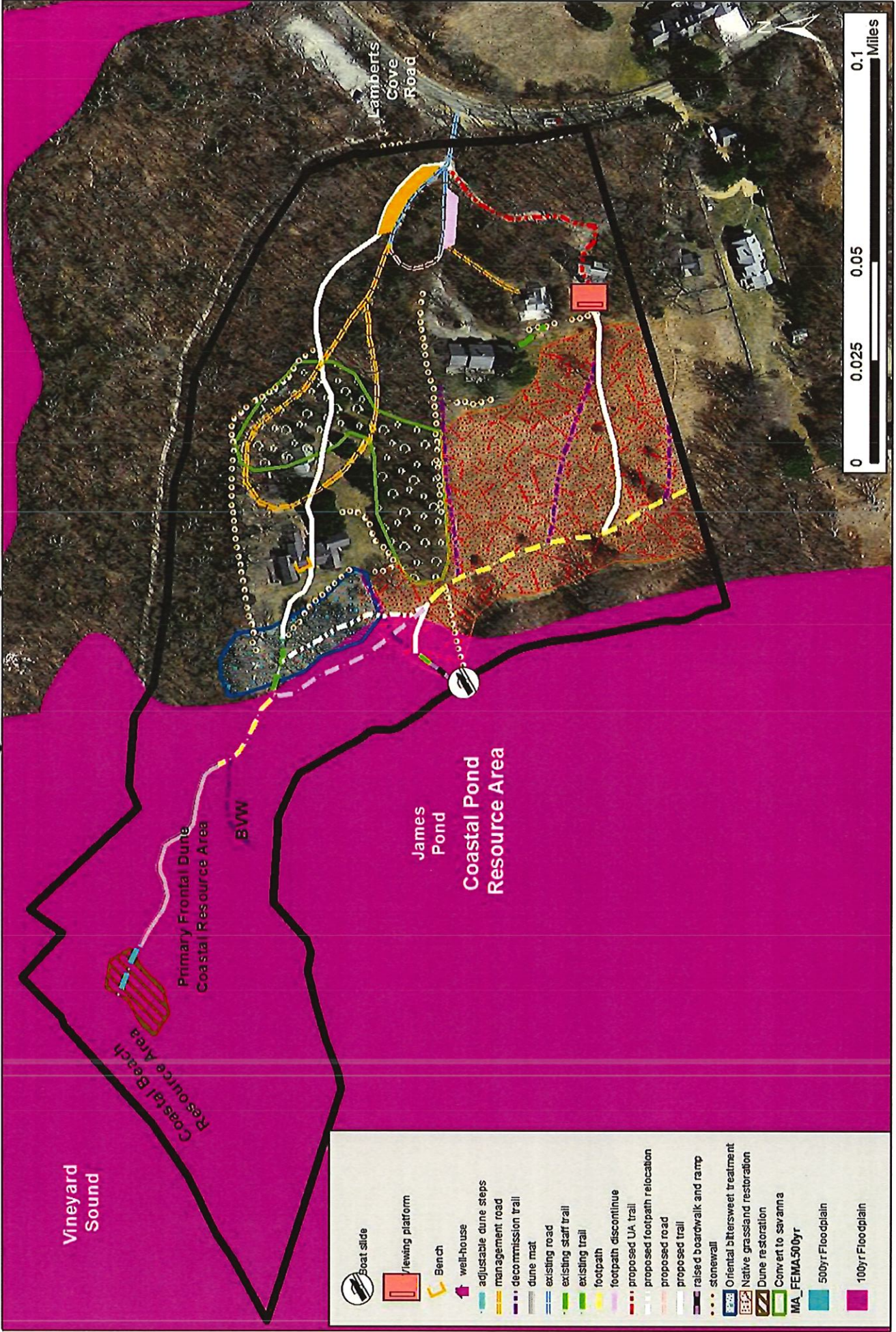
Sources: Office of Geographic and Environmental Information (MassGIS) Commonwealth of Massachusetts Executive Office of Environmental Affairs; Aerial USGS Ortho Imagery 2019; Zoning districts from Town of West Tisbury, MV Commission 2017; Coordinate Reference: State Plane, Mass Mainland, Meters, NAD83

Note: Map prepared by the Martha's Vineyard land bank for planning purposes only. The land bank is not responsible for end-users' interpretation of the map.

**Wetland resource areas delineated using Data Checklist for the Delineation of Resource Areas (2017) and Massachusetts Handbook for Delineation of Bordering Vegetated Wetlands (2022)**



# James Pond Preserve - MA FEMA Flood Zones Trail Planning and Management Areas



Sources: Office of Geographic and Environmental Information (MassGIS) Commonwealth of Massachusetts Executive Office of Environmental Affairs; Aerial USGS Ortho Imagery 2019; Zoning districts from Town of West Tisbury, MV Commission 2017; Coordinate Reference: State Plane, Mass Mainland, Meters, NAD83  
 Note: Map prepared by the Martha's Vineyard land bank for planning purposes only. The land bank is not responsible for end-users' interpretation of the map.  
**Wetland resource areas delineated using Data Checklist for the Delineation of Resource Areas (2017) and Massachusetts Handbook for Delineation of Bordering Vegetated Wetlands (2022)**