

- Notes:
1. Wetlands flagged by Cooper Environmental Services.
 2. CB F = concrete bound found
 - X = property lines staked, March 22, 2016
 - ~ = approx. edge yard from aerial photos
 - ~ = wetland area
- 1.0L = 1 ft. diameter locust

Nancy T. Hammond Trustee
92 Norton Farm Road
Assessor's Parcel
1 - 29

John E. & Kay L. Leaird, Trustees
90 Norton Farm Road
Assessor's Parcel
1 - 30

Amy Marshall
68 Norton Farm Road
Assessor's Parcel
1 - 28

40 Norton Farm Road
Assessor's Parcel
1 - 26
2.51 acres ±
(Includes land within Norton Farm Road)

BEUTLEBUNG TREE CARE LLC
PO Box 418
West Tisbury, MA 02576

Wetas / Marshall Tree Management Proposal

As indicated on plan prepared for Paul I. Weiss, remove the following surveyed and flagged trees to enhance and maintain Wetas and Marshall views of Vineyard Sound.

- (1) Black Locust tree (*Rhizobium pendunculata*) to buffer zone on Wetas's property.
- (2) Black Locust tree (*Rhizobium pendunculata*) to buffer zone on Marshall property.
- (3) Black Locust tree (*Rhizobium pendunculata*) to retain on Hammond property.
- (4) Black Locust tree (*Rhizobium pendunculata*) to retain on Hammond property.
- (5) Black Locust tree (*Rhizobium pendunculata*) to retain on Hammond property.

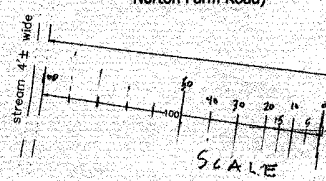
As indicated on plan prepared for Paul I. Weiss, preserve the following surveyed and flagged trees to enhance and maintain Wetas and Marshall views of Vineyard Sound.

- (1) Black Oak tree (*Quercus velutina*) to buffer zone on Hammond property.

All brush and debris created from permitted work will be removed from site via Marshall property with an minimal disturbance as possible.

Work will be supervised by Josh Scott, ISA certified arborist.

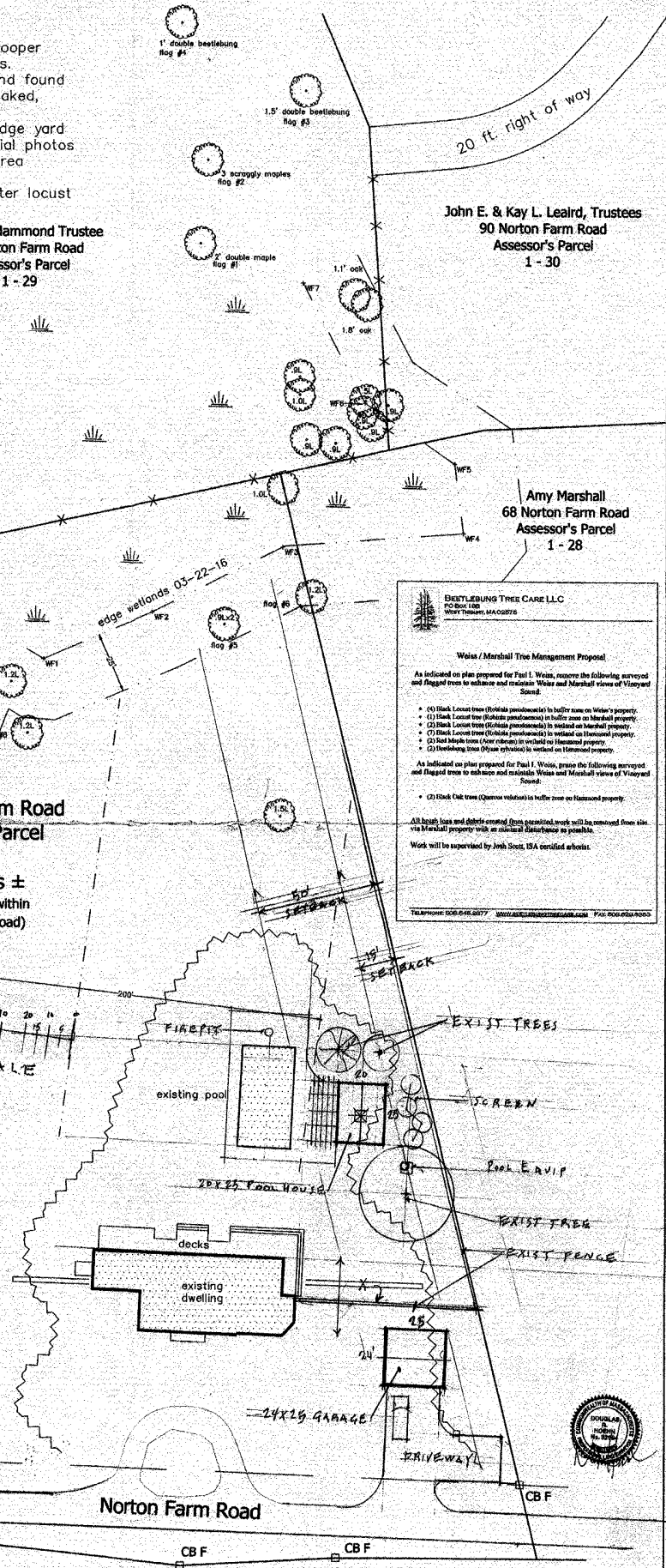
TELEPHONE: 508-648-8877 WWW.BEUTLEBUNGTREECARE.COM FAX: 508-648-8885

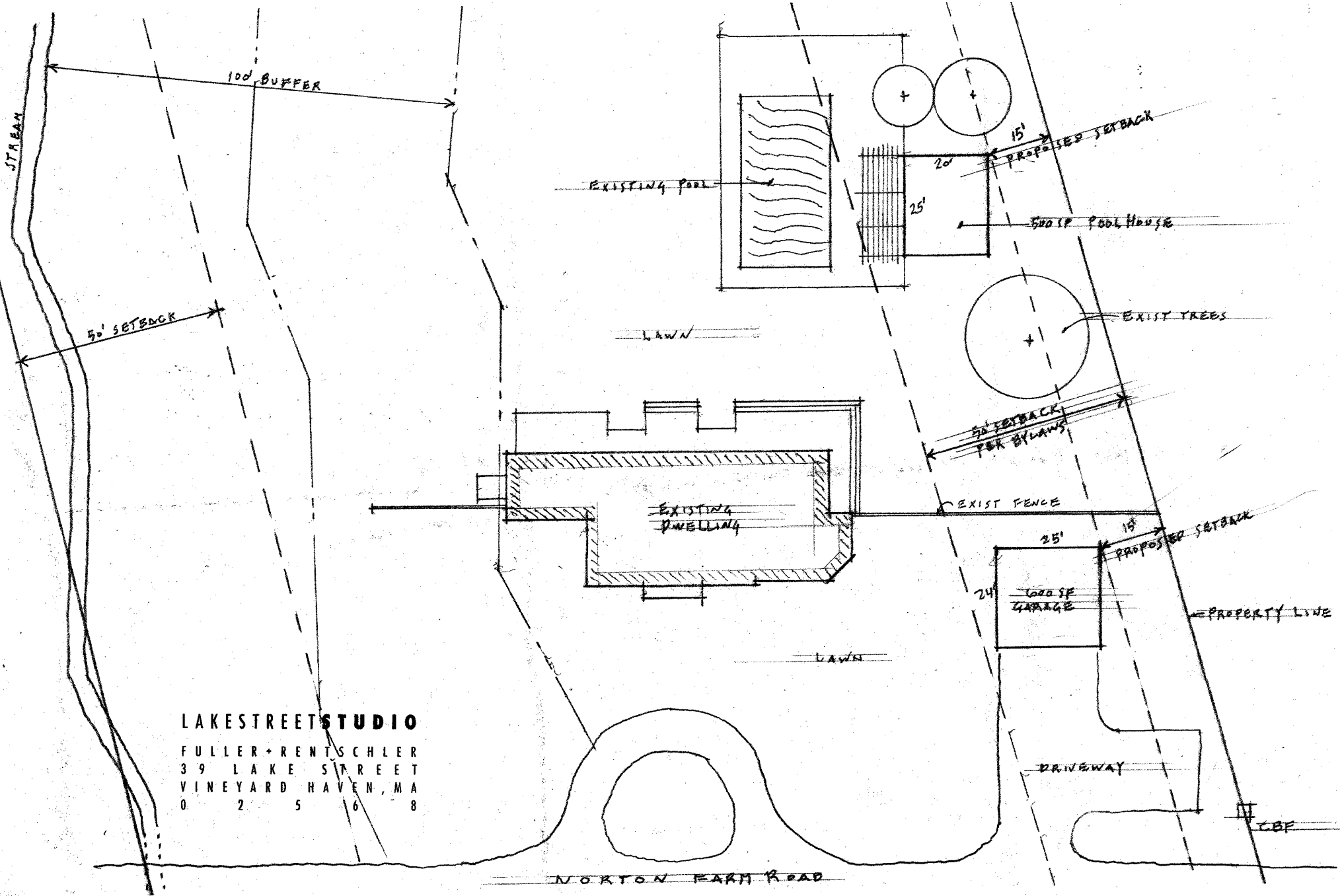


LAKE STREET STUDIO
FULLER + RENTSCHLER
39 LAKE STREET
VINEYARD HAVEN, MA
0 2 5 6 8

Site Plan
West Tisbury, Mass.
Prepared For
Paul I. Weiss, Trustee
Scale: 1" = 20' June 8, 2016

Schofield, Barbini & Hoehn Inc.
Land Surveying + Civil Engineering
12 Surveyor's Lane, Box 339
Vineyard Haven, Mass. 02568
508-693-2781
www.sbhinc.net
MV 5877





LAKE STREET STUDIO
 FULLER + RENTSCHLER
 39 LAKE STREET
 VINEYARD HAVEN, MA
 0 2 5 6 8

NORTON FARM ROAD