



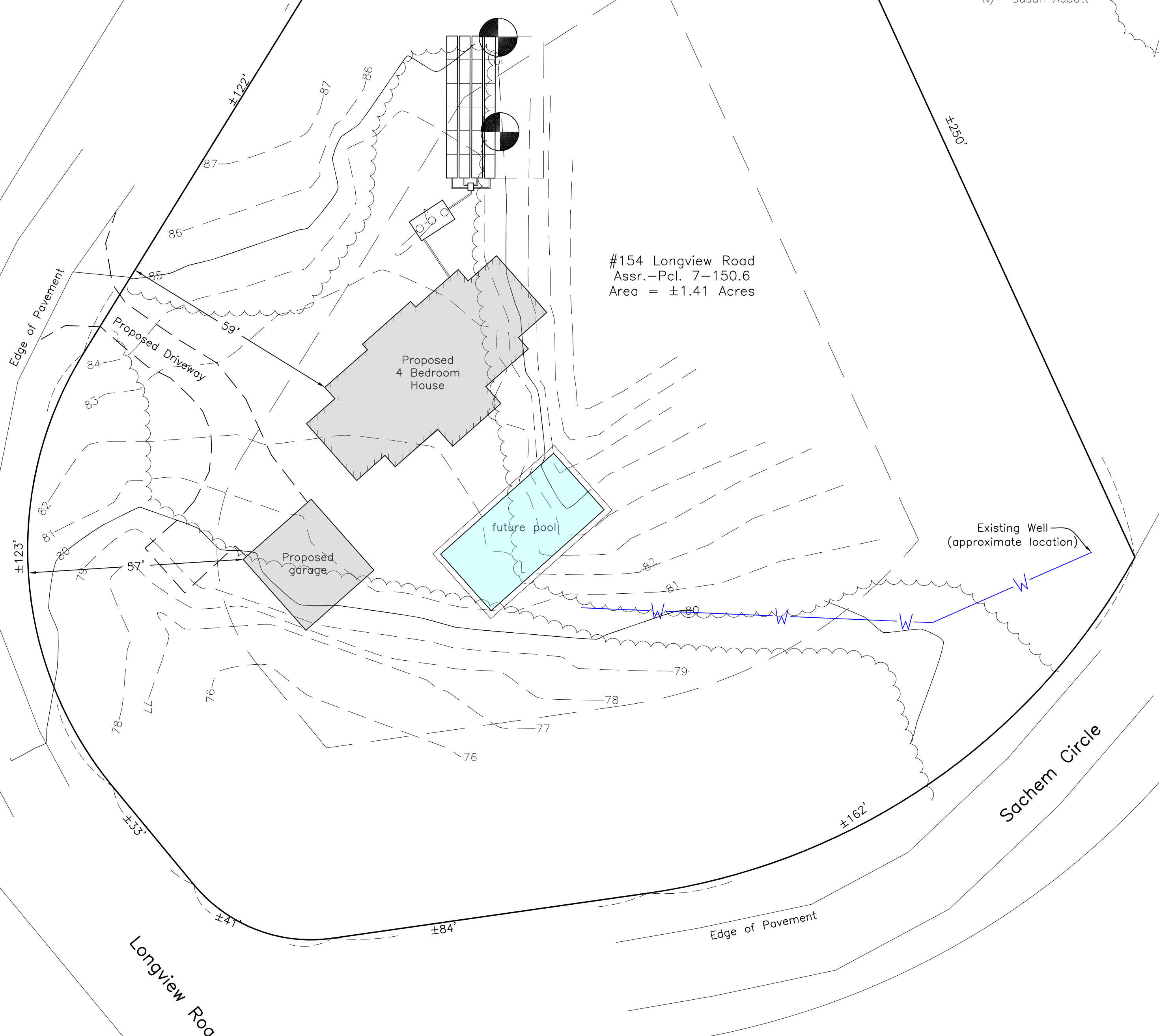
Assr.-Pcl. 7-134
Town of West Tisbury



Reid G. Silva
August 28, 2022

Assr.-Pcl. 7-150.5
"N/F Susan Abbott"

#154 Longview Road
Assr.-Pcl. 7-150.6
Area = ±1.41 Acres



Existing Well
(approximate location)

Site Plan
West Tisbury, Mass.
Prepared for
Brendan Crane

August 1, 2022 Scale: 1"=20'

W VINEYARD
LAND SURVEYING
& ENGINEERING
12 Cournoyer Road
P.O. Box 421
West Tisbury, MA 02575
P 508-693-3774 F 508-629-0440
VLSE.net