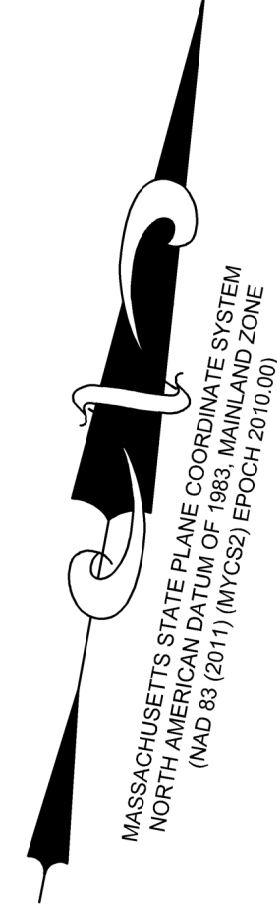
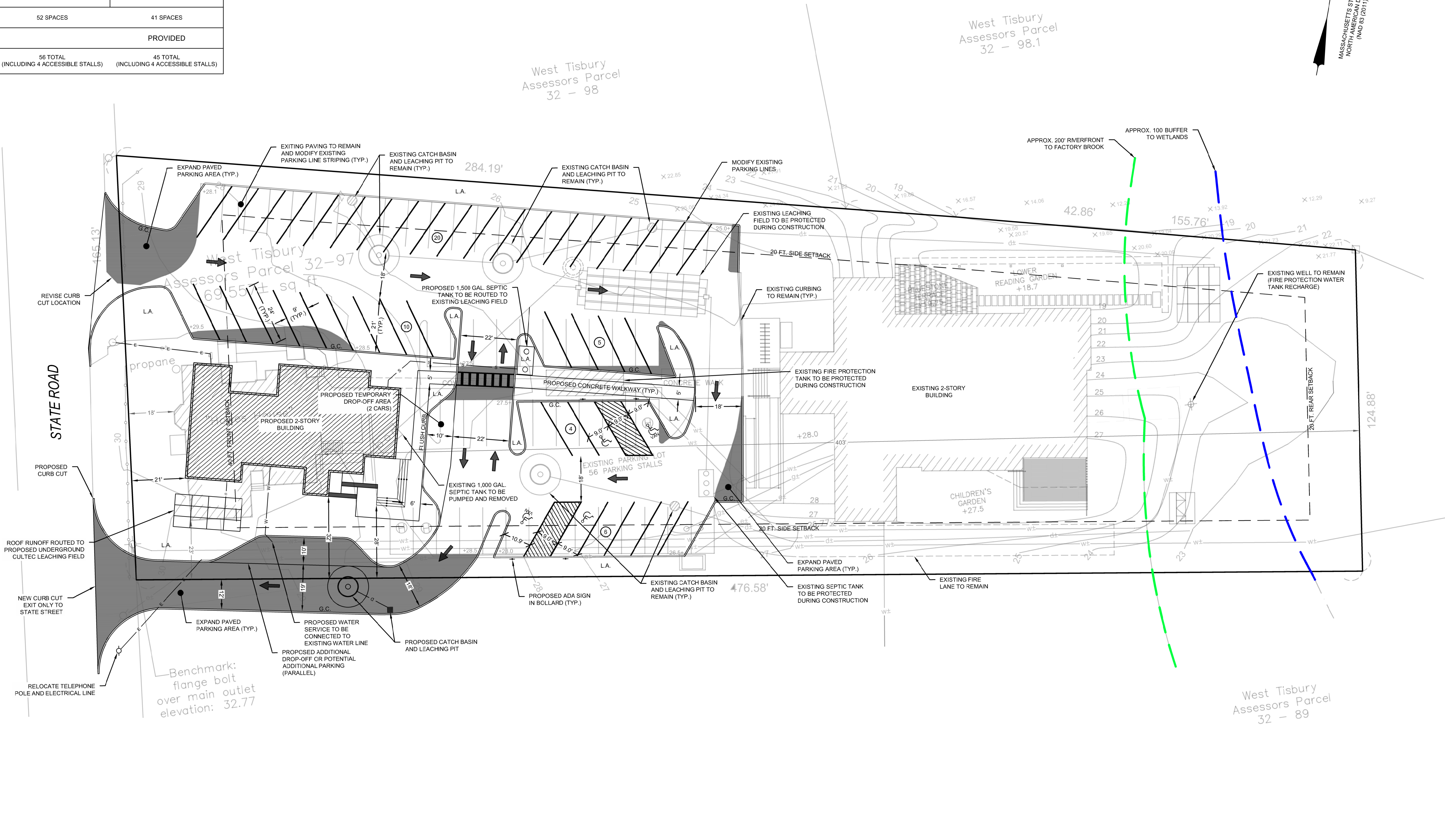


### ZONING TABLE - VR (VILLAGE RESIDENTIAL)

SUBJECT: ASSESSORS MAP 14 PARCEL 76	REQUIRED	EXISTING	PROPOSED
LOT AREA	3 AC	1.6± AC	NO CHANGE
FRONTAGE	75 FT.	165.13 FT.	NO CHANGE
FRONT SETBACK	40 FT.	18± FT.	21± FT.
SIDE SETBACK (SOUTH)	20 FT.	23± FT.	28± FT.
REAR SETBACK	20 FT.	40± FT.	37± FT.
MAXIMUM FLOOR AREA	1,000 S.F.	2,577± S.F.	3,105± S.F.
BUILDING HEIGHT	30 FT.	N/A	SEE ARCH. PLANS

### PARKING TABLE

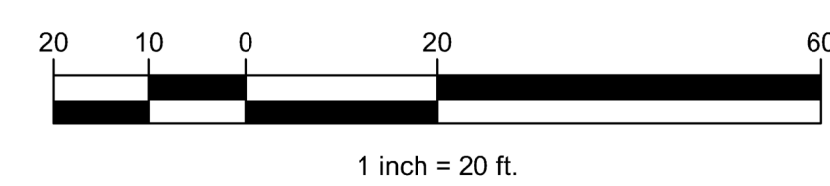
USE	REQUIRED	EXISTING	PROPOSED
TOTAL	1 SPACE PER 4 SEATS	52 SPACES	41 SPACES
<b>PROVIDED</b>			
ACCESSIBLE STALLS	PER 51-75 STALLS 3 MIN.	56 TOTAL (INCLUDING 4 ACCESSIBLE STALLS)	45 TOTAL (INCLUDING 4 ACCESSIBLE STALLS)



NO.	DATE	REVISION

SEAL

PROJECT	WEST STISBURY COUNCIL ON AGING
PROJECT NO.	1042A STATE ROAD
SHEET TITLE	SCHEMATIC CIVIL SITE PLAN
SCALE	1" = 20'
DRAWING FILE	C19827-CIV.dwg
DATE	01-31-2023
DRAWN BY	WGM
CHECKED BY	DBR



## SCHEMATIC PLAN

(NOT FOR CONSTRUCTION)

# C101

1 OF 1 SHEETS  
PROJECT NO. C19827.01

G:\C19827\01 - Kenan - Kelly Architects, Ltd. - CIV\CAD\WIP\C19827-CIV.dwg 1/31/2023 11:35 AM

Coastal Engineering Co., Inc. © 2023