

Town Copy

PETITION FOR JOINT OR IDENTICAL POLE LOCATIONS

July 24, 2021

TO THE BOARD OF SELECTMEN FOR THE TOWN OF WEST TISBURY, MASSACHUSETTS

**EVERSOURCE ENERGY and
VERIZON NEW ENGLAND INCORPORATED**

W/O# 4483439

request permission to locate and relocate poles, wires, cables, and fixtures, including the necessary anchors, guys and other such sustaining and protecting fixtures, to be owned and used in common by your petitioners, along and across the following public way or ways:

Middle Road

**Installation of Ten (10) New
Poles 3/21.5, 3/22.5, 3/23.5,
3/24.5, 3/25.5, 3/26.5, 3/27.5,
3/28.5, 3/29.5 and 3/30.5**

Wherefore they pray that after due notice and hearing as provided by law, they be granted joint or identical locations for and permission to erect and maintain poles, wires, and cables, together with such sustaining and protecting fixtures as they may find necessary, said poles to be erected substantially in accordance with the plan filed herewith marked **Plan No-4483439, dated May 28, 2021.**

Also that permission be and hereby is granted to each of said Companies to lay and maintain underground cables, conduits, wires, vaults and necessary equipment in the above or intersecting public ways for the purpose of making connections with such poles and buildings as each may desire for distributing purposes.

Your petitioners agree to reserve space for one crossarm at a suitable point on each of said poles for the fire, police, telephone, and telegraph signal wires belonging to the municipality and used by it exclusively for municipal purposes.

EVERSOURCE ENERGY

By Marissa Jackson

Marissa Jackson, Right-of-Way Agent

VERIZON NEW ENGLAND INCORPORATED

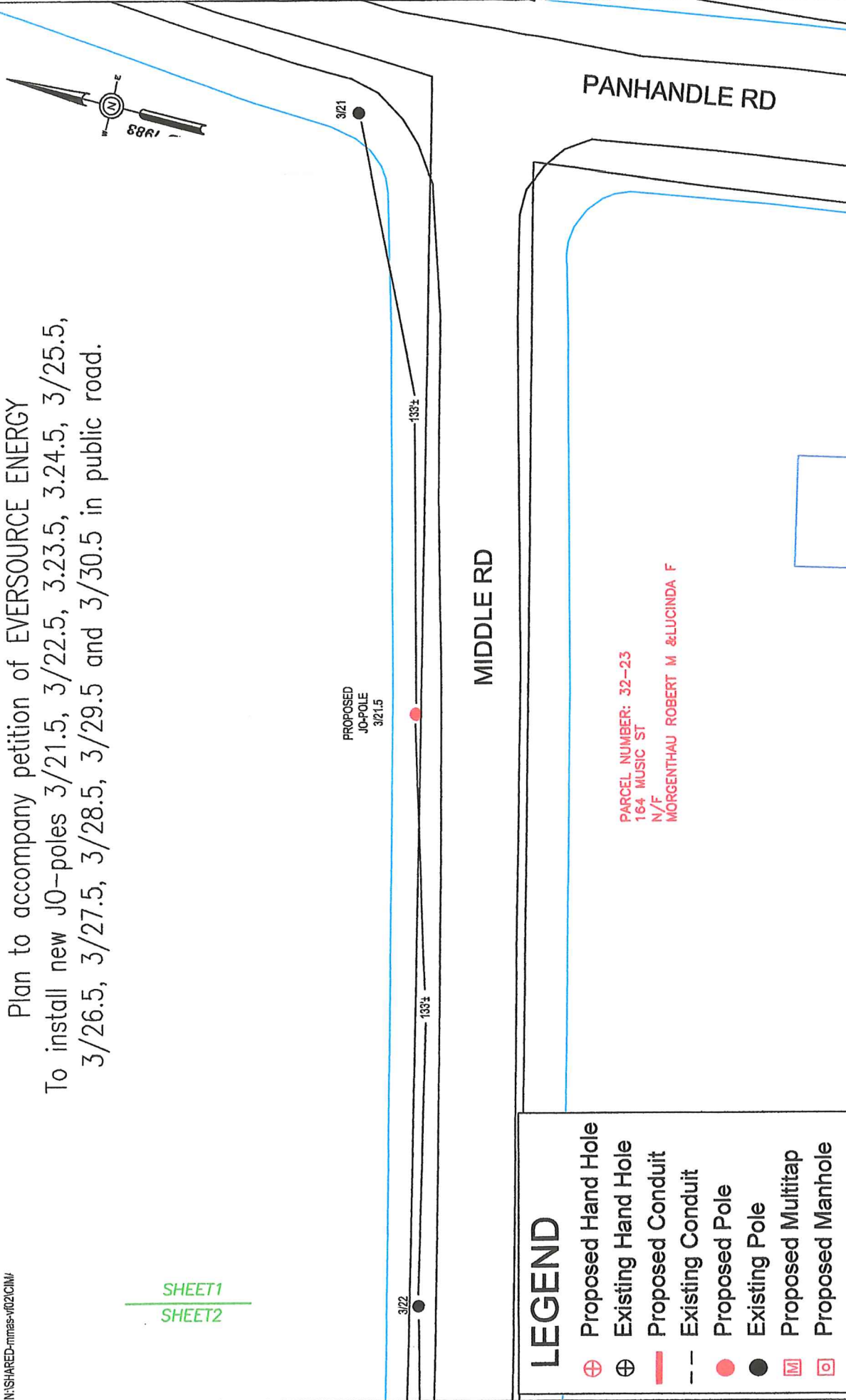
By Daryl Crossman

Daryl Crossman -Right-of-Way Manager

6/30/21

Plan to accompany petition of EVERSOURCE ENERGY
 To install new JO-poles 3/21.5, 3/22.5, 3/23.5, 3/24.5, 3/25.5,
 3/26.5, 3/27.5, 3/28.5, 3/29.5 and 3/30.5 in public road.

SHEET1
 SHEET2



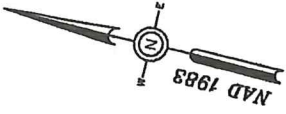
<p>NSSTAR EVERSOURCE ELECTRIC d/b/a 1165 MASSACHUSETTS AVE. DORCHESTER, MASS. 02125</p>	
<p>Plan of MIDDLE ROAD, WEST TISBURY</p>	
C#	
Ward #	
Work Order #	4483439
Surveyed by:	N/A
Research by:	N/A
Plotted by:	TL
Proposed Structures:	TL
Approved:	T THIBAUT
P#	1 of 10

BY YOUR USE OF THE INFORMATION CONTAINED IN THIS MAP YOU AGREE THAT NO WARRANTY OF ANY KIND IS EXPRESSED OR IMPLIED FOR THE ACCURACY OF THE INFORMATION CONTAINED HEREIN. EVERSOURCE ELECTRIC COMPANY, ITS AGENTS, OFFICERS, DIRECTORS, SHAREHOLDERS, EMPLOYEES OR AGENTS (COLLECTIVELY THE "EVERSOURCE ENTITIES") SHALL BE LIABLE FOR ANY LOSS OR INJURY CAUSED IN WHOLE OR IN PART BY USE OF THIS INFORMATION OR IN RELIANCE UPON IT TO THE MAXIMUM EXTENT ALLOWED BY LAW. YOU AGREE BY YOUR ACCEPTANCE OF THE INFORMATION TO RELEASE, INDEMNIFY AND HOLD THE EVERSOURCE ENTITIES HARMLESS FROM ANY SUCH LOSS OR INJURY.

THE INFORMATION MAY NOT REPRESENT A SURVEY, MAY NOT BE THE MOST COMPLETE, AND IS SUBJECT TO CHANGE WITHOUT NOTICE. NO LIABILITY IS ASSUMED FOR THE ACCURACY OF THE INFORMATION EITHER EXPRESSED OR IMPLIED. ALL WARRANTIES ARE DISCLAIMED. THE INFORMATION OR USE OF THE INFORMATION FOR OTHER THAN ITS INTENDED PURPOSES ARE PROHIBITED.

MASS. LAW
 REQUIRES 72 HOURS ADVANCE NOTICE TO UTILITY COMPANIES BEFORE DIGGING BY ANYONE. CALL DIG-SAFE 1-888-944-7233

SHEET1
SHEET2



PARCEL NUMBER: 25-1-2
55 PANHANDLE RD
N/F
NATURE CONSERVANCY EASTERN
RESOURCE OFFICE

SHEET2
SHEET3

PROPOSED
10-POLE
3/22.5

3/22

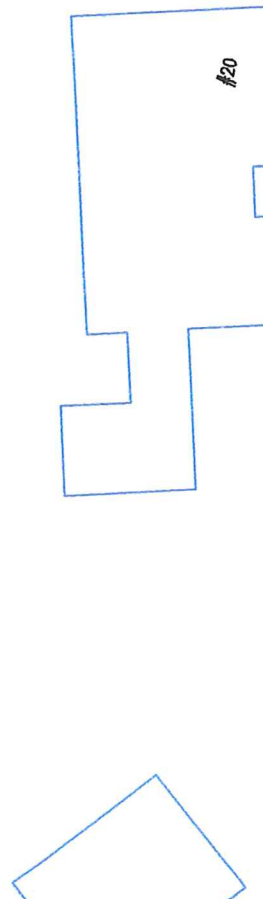
130%

130%

3/23

MIDDLE RD

PARCEL NUMBER: 32-21
20 MIDDLE RD
N/F
SEBESTA LISA



SCALE IN FEET

BY YOUR USE OF THE INFORMATION CONTAINED IN THIS MAP, YOU AGREE THAT NO WARRANTY OF ANY KIND, EXPRESS OR IMPLIED, IS GIVEN WITH RESPECT TO THE INFORMATION. NEITHER NSTAR ELECTRIC COMPANY, NSTAR GAS COMPANY NOR ITS PARENTS, AFFILIATES, OFFICERS, DIRECTORS, SHAREHOLDERS, EMPLOYEES OR AGENTS (COLLECTIVELY THE "NSTAR ENTITIES") SHALL BE LIABLE FOR ANY LOSS OR INJURY CAUSED IN WHOLE OR IN PART BY USE OF THIS INFORMATION, OR IN RELIANCE UPON IT, TO THE MAXIMUM EXTENT ALLOWED BY LAW, YOU AGREE BY YOUR ACCEPTANCE OF THE INFORMATION TO RELEASE, INDEMNIFY AND HOLD THE NSTAR ENTITIES HARMLESS FROM ANY SUCH LOSS OR INJURY. THE INFORMATION MAY NOT REPRESENT A SURVEY, MAY NOT BE THE MOST COMPLETE AND IS SUBJECT TO CHANGE WITHOUT NOTICE. YOU AGREE TO HOLD THE NSTAR ENTITIES HARMLESS FROM ANY LOSS OR INJURY CAUSED BY YOUR USE OF THIS INFORMATION OR USE OF THE INFORMATION FOR OTHER THAN ITS INTENDED PURPOSES ARE PROHIBITED.

MASS. LAW

REQUIRES 72 HOURS ADVANCE NOTICE TO UTILITY COMPANIES BEFORE DIGGING BY ANYONE. CALL DIG-SAFE 1-888-344-7233

NSTAR EVERSOURCE
Electric
Globe
1765 MASSACHUSETTS AVE. DORCHESTER, MASS. 02125

Plan of MIDDLE ROAD, WEST TISBURY

Showing PROPOSED POLE LOCATIONS

C#

Ward #

Work Order # 4483439

Surveyed by: N/A

Research by: N/A

Plotted by: TL

Proposed Structures: TL

Approved: T THIBAUT

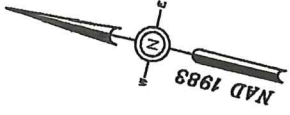
P#

Date MAY 28, 2021

Scale 1"=30'

SHEET 2 of 10

SHEET2
SHEET3



PARCEL NUMBER: 25-1-2
55 PANHANDLE RD
N/F
NATURE CONSERVANCY EASTERN
RESOURCE OFFICE

PROPOSED
JO-POLE
3/23.5

MIDDLE RD

PARCEL NUMBER: 32-18-1
26 MIDDLE RD
N/F
MILLETT CRAIG J & LISSA M-TRS
GLIMMERGLASS TRUST

PARCEL NUMBER: 32-20
74 MIDDLE RD
N/F
EISENDRATH ROBERT M--TR
EISENDRATH REALTY TRUST

3/23

138'

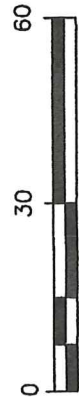
138'

3/24

SHEET3
SHEET4

BY YOUR USE OF THE INFORMATION CONTAINED IN THIS MAP, YOU AGREE THAT NO WARRANTY OF ANY KIND, EXPRESS OR IMPLIED, IS GIVEN WITH RESPECT TO THE INFORMATION. NEITHER NSTAR ELECTRIC COMPANY, NSTAR GAS COMPANY, NOR ITS PARENTS, AFFILIATES, OFFICERS, DIRECTORS, SHAREHOLDERS, EMPLOYEES OR AGENTS (COLLECTIVELY THE "NSTAR ENTITIES") SHALL BE LIABLE FOR ANY LOSS OR INJURY CAUSED IN WHOLE OR IN PART BY USE OF THIS INFORMATION, OR IN RELIANCE UPON IT, TO THE MAXIMUM EXTENT ALLOWED BY LAW. YOU AGREE BY YOUR ACCEPTANCE OF THE INFORMATION TO RELEASE, INDEMNIFY AND HOLD THE NSTAR ENTITIES HARMLESS FROM ANY SUCH LOSS OR INJURY.

THE INFORMATION MAY NOT REPRESENT A SURVEY. YOU MAY NOT BE THE MOST COMPLETE AND IS SUBJECT TO CHANGE WITHOUT NOTICE. YOU AGREE TO WAIVE THE RIGHT OF THE INFORMATION TO BE REPRODUCED OR COPIED IN ANY MANNER OR FOR ANY PURPOSE OTHER THAN THE INFORMATION OR USE OF THE INFORMATION FOR OTHER THAN ITS INTENDED PURPOSES ARE PROHIBITED.



SCALE IN FEET

C#	
Ward #	
Work Order #	4483439
Surveyed by:	N/A
Research by:	N/A
Plotted by:	TL
Proposed Structures:	TL
Approved:	T THIBAUT
P#	

NSTAR EVERSOURCE
Electric
Gas
1165 MASSACHUSETTS AVE. DORCHESTER, MASS. 02125

Plan of MIDDLE ROAD, WEST TISBURY

Showing PROPOSED POLE LOCATIONS

Scale 1" = 30'
Date MAY 28, 2021
SHEET 3 of 10

MASS. LAW
REQUIRES 72 HOURS ADVANCE NOTICE TO UTILITY COMPANIES BEFORE DIGGING BY ANYONE. CALL DIG-SAFE 1-888-344-7233

PARCEL NUMBER: 25-1-2
 55 PANHANDLE RD
 N/F
 NATURE CONSERVANCY EASTERN
 RESOURCE OFFICE

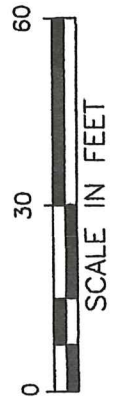
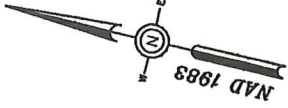
PROPOSED
 JO-POLE
 3/24-5

MIDDLE RD

PARCEL NUMBER: 32-19
 40 MIDDLE RD
 N/F
 BRYANT JUDITH P & BRYANT JOHN H

SHEET3
 SHEET4

SHEET4
 SHEETS



BY YOUR USE OF THE INFORMATION CONTAINED IN THIS MAP, YOU AGREE THAT NO WARRANTY OF ANY KIND, EXPRESS OR IMPLIED, IS GIVEN WITH RESPECT TO THE INFORMATION. NEITHER NSTAR ELECTRIC COMPANY, NSTAR GAS COMPANY NOR ITS PARENTS, AFFILIATES, OFFICERS, DIRECTORS, MANAGERS, EMPLOYEES OR AGENTS (COLLECTIVELY THE "NSTAR ENTITIES") SHALL BE LIABLE FOR ANY LOSSES OR DAMAGES CAUSED BY THE USE OF THIS INFORMATION OR FOR ANY NEGLIGENCE UPON IT. YOU AGREE TO HOLD THE NSTAR ENTITIES HARMLESS FROM ANY SUCH LOSS OR INJURY.

THE INFORMATION MAY NOT REPRESENT A SURVEY, MAY NOT BE THE MOST COMPLETE AND IS SUBJECT TO CHANGE WITHOUT NOTICE. NO LIABILITY IS ASSUMED FOR THE ACCURACY OF THE INFORMATION, EITHER EXPRESSED OR IMPLIED. UNAUTHORIZED ATTEMPTS TO MODIFY THE INFORMATION OR USE THE INFORMATION FOR OTHER THAN ITS INTENDED PURPOSES ARE PROHIBITED.

MASS. LAW

REQUIRES 72 HOURS ADVANCE NOTICE TO UTILITY COMPANIES BEFORE DIGGING BY ANYONE. CALL DIG-SAFE 1-888-344-7233

C#	
Ward #	
Work Order #	4483439
Surveyed by:	N/A
Research by:	N/A
Plotted by:	TL
Proposed Structures:	TL
Approved:	T THIBAUT
P#	

NSTAR EVERSOURCE
 ELECTRIC
 1105 MASSACHUSETTS AVE. DORCHESTER, MASS. 02125

Plan of MIDDLE ROAD, WEST TISBURY

Showing PROPOSED POLE LOCATIONS

Scale 1" = 30'

Date MAY 28, 2021

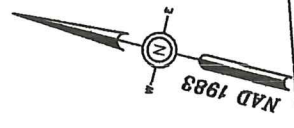
SHEET 4 of 10

PARCEL NUMBER: 32-2
57 MIDDLE RD
N/F
DRIPPS ELIZABETH W-TR THE
ELIZABETH W DRIPPS TR

SHEET5
SHEET6

PARCEL NUMBER: 25-1-2
55 PANHANDLE RD
N/F
NATURE CONSERVANCY EASTERN
RESOURCE OFFICE

SHEET4
SHEET5



MIDDLE RD

3/25

164'

PROPOSED
JO-POLE
3/25.5

188'

3/26

⊗ 3/425

PARCEL NUMBER: 32-17
30 MIDDLE RD
N/F
CABOT NANCY P -TR & CABOT DANIEL
B -TR

BY YOUR USE OF THE INFORMATION CONTAINED IN THIS MAP, YOU AGREE THAT NO WARRANTY OF ANY KIND, EXPRESS OR IMPLIED, INCLUDING THE INFORMATION, WHETHER NSTAR ELECTRIC OR ANY OTHER COMPANY, FOR ITS PRODUCTS, AFFILIATES, OFFICERS, DIRECTORS, SHAREHOLDERS, EMPLOYEES OR AGENTS (COLLECTIVELY THE "NSTAR ENTITIES") SHALL BE LIABLE FOR ANY LOSS OR INJURY CAUSED IN WHOLE OR IN PART BY USE OF THIS INFORMATION, OR IN RELIANCE UPON IT, TO THE MAXIMUM EXTENT ALLOWED BY LAW, YOU AGREE BY YOUR ACCEPTANCE OF THE INFORMATION TO RELEASE, INDEMNIFY AND HOLD THE NSTAR ENTITIES HARMLESS FROM ANY SUCH LOSS OR INJURY.

THE INFORMATION MAY NOT REPRESENT A SURVEY, MAY NOT BE THE MOST COMPLETE, AND IS SUBJECT TO CHANGE WITHOUT NOTICE. NO LIABILITY IS ASSUMED FOR THE ACCURACY OF THE INFORMATION, EITHER EXPRESSED OR IMPLIED. UNWARRANTED ATTEMPTS TO SCOOP THE INFORMATION OR USE THE INFORMATION FOR OTHER THAN ITS INTENDED PURPOSES ARE PROHIBITED.



SCALE IN FEET

NSTAR EVERSOURCE
ELECTRIC
07070
1165 MASSACHUSETTS AVE. DORCHESTER, MASS. 02125

Plan of MIDDLE ROAD, WEST TISBURY

Showing PROPOSED POLE LOCATIONS

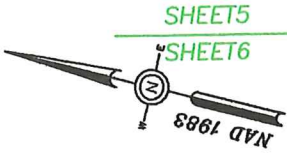
C#	
Ward #	
Work Order #	4483439
Surveyed by:	N/A
Research by:	N/A
Plotted by:	TL
Proposed Structures:	TL
Approved:	T THIBAUT
P#	

MASS. LAW
REQUIRES 72 HOURS ADVANCE NOTICE TO UTILITY COMPANIES
BEFORE DIGGING BY ANYONE. CALL DIG-SAFE 1-888-344-7233

Scale 1"=30'
Date MAY 28, 2021
SHEET 5 of 10

SHEET6
SHEET7

PARCEL NUMBER: 32-2
57 MIDDLE RD
N/F
DRIPPS ELIZABETH W-TR THE
ELIZABETH W DRIPPS TR



SHEET5
SHEET6

MIDDLE RD

3/27

138±

PROPOSED
JO-POLE
3/26.5

138±

3/26

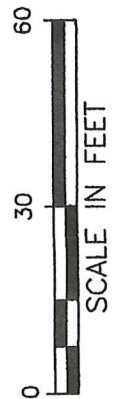
PARCEL NUMBER: 32-3-2
O MIDDLE RD
N/F
KENNEY BRIAN R TR ELIZABETH BLAIR
KENNEY & KRIST

BY YOUR USE OF THE INFORMATION CONTAINED IN THIS MAP, YOU AGREE THAT NO WARRANTY OF ANY KIND, EXPRESS OR IMPLIED, OR ANY OTHER INFORMATION, INCLUDING, BUT NOT LIMITED TO, THE ACCURACY, COMPLETENESS, OR TIMELINESS OF THE INFORMATION, IS MADE BY NSTAR ELECTRIC CORPORATION OR ANY OF ITS PARENTS, AFFILIATES, OFFICERS, DIRECTORS, SHAREHOLDERS, EMPLOYEES, OR AGENTS (COLLECTIVELY THE "NSTAR ENTITIES") SHALL BE LIABLE FOR ANY LOSS OR INJURY CAUSED IN WHOLE OR IN PART BY USE OF THIS INFORMATION, OR IN RELIANCE UPON IT, TO THE MAXIMUM EXTENT ALLOWED BY LAW. YOU AGREE BY YOUR ACCEPTANCE OF THE INFORMATION TO RELEASE, INDEMNIFY AND HOLD THE NSTAR ENTITIES HARMLESS FROM ANY SUCH LOSS OR INJURY.

THE INFORMATION MAY NOT REPRESENT A SURVEY, MAY NOT BE THE MOST COMPLETE, AND IS SUBJECT TO CHANGE WITHOUT NOTICE. NO LIABILITY IS ASSUMED FOR THE ACCURACY OF THE INFORMATION, EITHER EXPRESSED OR IMPLIED. UNAUTHORIZED ATTEMPTS TO REPRODUCE THE INFORMATION OR USE THE INFORMATION FOR OTHER THAN ITS INTENDED PURPOSES ARE PROHIBITED.

MASS. LAW

REQUIRES 72 HOURS ADVANCE NOTICE TO UTILITY COMPANIES BEFORE DIGGING BY ANYONE. CALL DIG-SAFE 1-888-344-7233



NSTAR EVERSOURCE
ELECTRIC
CORP
1165 MASSACHUSETTS AVE. DORCHESTER, MASS. 02125

Plan of MIDDLE ROAD, WEST TISBURY

Showing PROPOSED POLE LOCATIONS

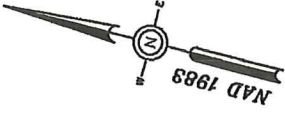
C#	
Ward #	
Work Order #	4483439
Surveyed by:	N/A
Research by:	N/A
Plotted by:	TL
Proposed Structures:	TL
Approved:	T THIBAUT
P#	

Date MAY 28, 2021

Scale 1"=30'

SHEET 6 of 10

PARCEL NUMBER: 32-2
57 MIDDLE RD
N/F
DRIPPS ELIZABETH W-TR THE
ELIZABETH W DRIPPS TR



MIDDLE RD

3/28

138±

PROPOSED
JO-POLE
3/27.5

138±

3/27

PARCEL NUMBER: 32-3-1
0 MIDDLE RD
N/F
KENNY BRIAN R TR ELIZABETH BLAIR
KENNEY & KRIST

BY YOUR USE OF THE INFORMATION CONTAINED IN THIS MAP, YOU AGREE THAT NO WARRANTY OF ANY KIND, EXPRESS OR IMPLIED, IS GIVEN WITH RESPECT TO THE INFORMATION. NEITHER NSTAR ELECTRIC COMPANY, NSTAR GAS COMPANY, NOR ITS PARENTS, AFFILIATES, OFFICERS, DIRECTORS, SHAREHOLDERS, EMPLOYEES OR AGENTS (COLLECTIVELY THE "NSTAR ENTITIES") SHALL BE LIABLE FOR ANY LOSS OR INJURY CAUSED IN WHOLE OR IN PART BY USE OF THIS INFORMATION, OR IN RELIANCE UPON IT, TO THE MAXIMUM EXTENT ALLOWED BY LAW, YOU AGREE BY YOUR ACCEPTANCE OF THE INFORMATION TO RELEASE, INDEMNIFY AND HOLD THE NSTAR ENTITIES HARMLESS FROM ANY SUCH LOSS OR INJURY.

THE INFORMATION MAY NOT REPRESENT A SURVEY, MAY NOT BE THE MOST COMPLETE, AND IS SUBJECT TO CHANGE WITHOUT NOTICE. YOU AGREE TO HOLD THE INFORMATION, INFORMATION CONTAINED HEREIN, UNPUBLISHED, ATTEMPTS TO VERIFY THE INFORMATION OR USE THE INFORMATION FOR OTHER THAN ITS INTENDED PURPOSES ARE PROHIBITED.



SCALE IN FEET

MASS. LAW

REQUIRES 72 HOURS ADVANCE NOTICE TO UTILITY COMPANIES BEFORE DIGGING BY ANYONE. CALL DIG-SAFE 1-888-344-7233

NSTAR EVERSOURCE
ELECTRIC
d/b/a
1165 MASSACHUSETTS AVE. DORCHESTER, MASS. 02125

Plan of MIDDLE ROAD, WEST TISBURY

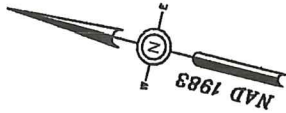
Showing PROPOSED POLE LOCATIONS

C#	Ward #
Work Order # 4483439	Surveyed by: N/A
Research by: N/A	Plotted by: TL
Proposed Structures: TL	Approved: T THIBAUT
P#	Scale 1"=30'
	SHEET 7 of 10
	Date MAY 28, 2021

PARCEL NUMBER: 25-1-2
 55 PANHANDLE RD
 N/F
 NATURE CONSERVANCY EASTERN
 RESOURCE OFFICE

SHEET8
 SHEET9

SHEET7
 SHEET8



3/28-AA

3/28-S

MIDDLE RD

3/29

136'±

PROPOSED
 JO-POLE
 3/28.5

136'±

3/28

BY YOUR USE OF THE INFORMATION CONTAINED IN THIS MAP, YOU AGREE THAT NO WARRANTY OF ANY KIND, EXPRESS OR IMPLIED, IS GRANTED WITH RESPECT TO THE INFORMATION. NEITHER NSTAR ELECTRIC COMPANY, NSTAR GAS COMPANY NOR ITS PARENTS, AFFILIATES, OFFICERS, DIRECTORS, SHAREHOLDERS, EMPLOYEES OR AGENTS (COLLECTIVELY THE "NSTAR ENTITIES") SHALL BE LIABLE FOR ANY LOSS OR INJURY CAUSED IN WHOLE OR IN PART BY USE OF THIS INFORMATION OR IN RELIANCE UPON IT. TO THE MAXIMUM EXTENT ALLOWED BY LAW, YOU AGREE BY YOUR ACCEPTANCE OF THE INFORMATION TO RELEASE, INDEMNIFY AND HOLD THE NSTAR ENTITIES HARMLESS FROM ANY SUCH LOSS OR INJURY.

THE INFORMATION MAY NOT REPRESENT A SURVEY, MAY NOT BE THE MOST COMPLETE AND IS SUBJECT TO CHANGE WITHOUT NOTICE. NO LIABILITY IS ASSUMED FOR THE ACCURACY OF THE INFORMATION. THE INFORMATION IS PROVIDED FOR YOUR INFORMATION ONLY. THE INFORMATION OR USE OF THE INFORMATION FOR OTHER THAN ITS INTENDED PURPOSES ARE PROHIBITED.



SCALE IN FEET

MASS. LAW
 REQUIRES 72 HOURS ADVANCE NOTICE TO UTILITY COMPANIES BEFORE DIGGING BY ANYONE. CALL DIG-SAFE 1-888-344-7233

C#	
Ward #	
Work Order #	4483439
Surveyed by:	N/A
Research by:	N/A
Plotted by:	TL
Proposed Structures:	TL
Approved:	T THIBAUT
P#	

NSTAR EVERSOURCE
 ELECTRIC
 d/b/a
 1169 MASSACHUSETTS AVE. DORCHESTER, MASS. 02125

Plan of MIDDLE ROAD, WEST TISBURY

Showing PROPOSED POLE LOCATIONS

Scale 1"=30'
 Date MAY 28, 2021

SHEET 8 of 10

N:\SHARED-nmas-v\02\CI\IMAGE\BASELINES\W\1\W\1\MIDDLE\EA.dwg

PARCEL NUMBER: 25-1-2
55 PANHANDLE RD
N/F
NATURE CONSERVANCY EASTERN
RESOURCE OFFICE

SHEET8
SHEET9

SHEET9
SHEET10

3/29-S

3/30-S

MIDDLE RD

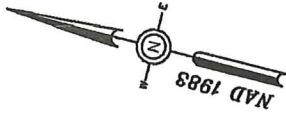
3/29

131'±

PROPOSED
JO-POLE
3/29.5

131'±

3/30



BY YOUR USE OF THE INFORMATION CONTAINED IN THIS MAP, YOU AGREE THAT NO WARRANTY OF ANY KIND, EXPRESS OR IMPLIED, IS GIVEN WITH RESPECT TO THE INFORMATION. NEITHER NSTAR ELECTRIC COMPANY, NSTAR GAS COMPANY NOR ITS PARENTS, AFFILIATES, OFFICERS, DIRECTORS, SHAREHOLDERS, EMPLOYEES OR AGENTS (COLLECTIVELY THE "NSTAR ENTITIES") SHALL BE LIABLE FOR ANY LOSS OR INJURY CAUSED IN WHOLE OR IN PART BY USE OF THIS INFORMATION OR IN RELIANCE UPON IT, TO THE MAXIMUM EXTENT ALLOWED BY LAW. YOU AGREE BY YOUR ACCEPTANCE OF THE INFORMATION TO RELEASE, INDEMNIFY AND HOLD THE NSTAR ENTITIES HARMLESS FROM ANY SUCH LOSS OR INJURY.

THE INFORMATION MAY NOT REPRESENT A SURVEY. YOU MAY NOT BE THE MOST COMPLETE AND IS SUBJECT TO CHANGE WITHOUT NOTICE. NO LIABILITY IS ASSUMED FOR THE ACCURACY OF THE INFORMATION. ERRORS EXPRESSED OR IMPLIED. UNAUTHORIZED ATTEMPTS TO MODIFY THE INFORMATION OR USE THE INFORMATION FOR OTHER THAN ITS INTENDED PURPOSES ARE PROHIBITED.

MASS. LAW

REQUIRES 72 HOURS ADVANCE NOTICE TO UTILITY COMPANIES BEFORE DIGGING BY ANYONE. CALL DIG-SAFE 1-888-344-7233

C#	
Ward #	
Work Order #	4483439
Surveyed by:	N/A
Research by:	N/A
Plotted by:	TL
Proposed Structures:	TL
Approved:	T THIBAUT
P#	

NSTAR EVERSOURCE
1165 MASSACHUSETTS AVE. DORCHESTER, MASS. 02125

Plan of MIDDLE ROAD, WEST TISBURY

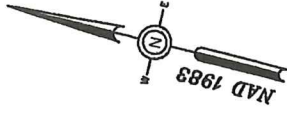
Showing PROPOSED POLE LOCATIONS



SCALE IN FEET

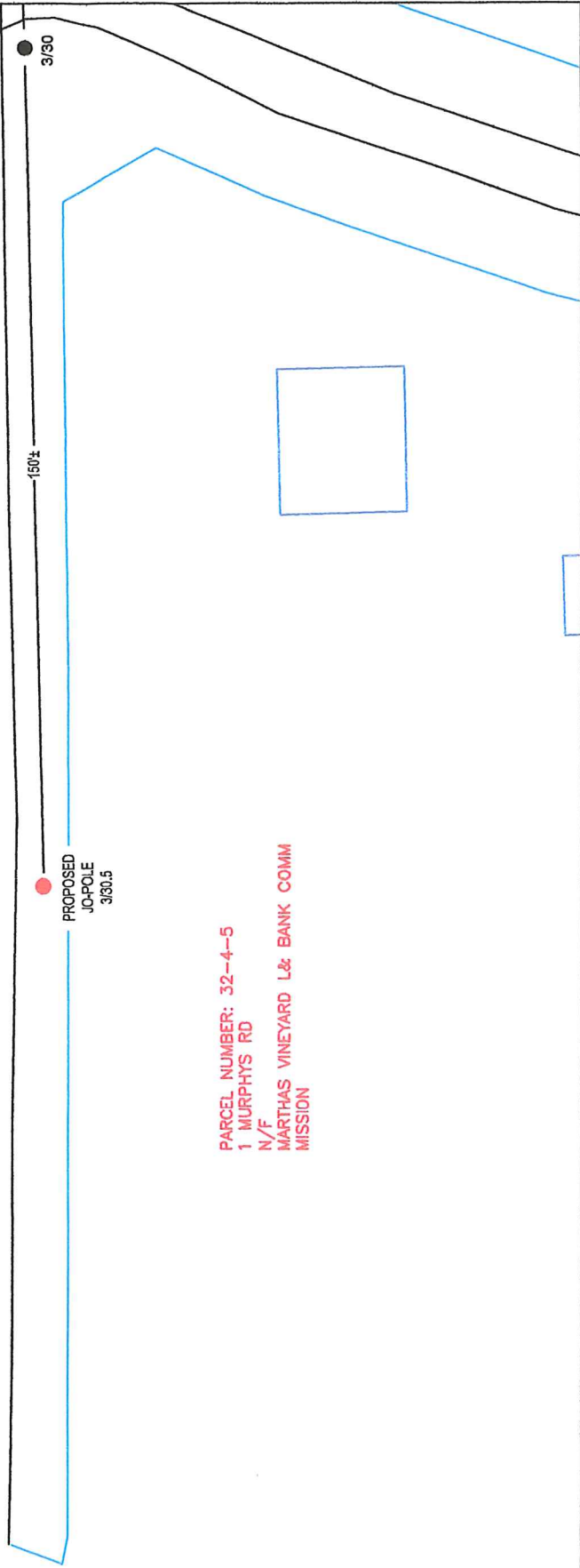
Scale 1"=30'
Date MAY 28, 2021
SHEET 9 of 10

SHEET9
SHEET10



PARCEL NUMBER: 32-1
91 MIDDLE RD
N/F
JONES VC & JONES EN-TRS 9
MIDDLE
ROAD NOMINEE TRUST
C/O VIRGINIA CROWELL JONES

MIDDLE RD



PARCEL NUMBER: 32-4-5
1 MURPHYS RD
N/F
MARTHAS VINEYARD L& BANK COMM
MISSION

BY YOUR USE OF THE INFORMATION CONTAINED IN THIS MAP, YOU AGREE THAT NO WARRANTY OF ANY KIND, EXPRESS OR IMPLIED, IS GIVEN WITH RESPECT TO THE INFORMATION. NEITHER NSTAR ELECTRIC COMPANY, NSTAR GAS COMPANY NOR ITS PARENTS, AFFILIATES, OFFICERS, DIRECTORS, SHAREHOLDERS, EMPLOYEES OR AGENTS (COLLECTIVELY THE "NSTAR ENTITIES") SHALL BE LIABLE FOR ANY LOSS OR INJURY CAUSED IN WHOLE OR IN PART BY USE OF THIS INFORMATION OR IN RELIANCE UPON IT, TO THE MAXIMUM EXTENT ALLOWED BY LAW. YOU AGREE BY YOUR ACCEPTANCE OF THE INFORMATION TO RELEASE, DEFEND AND HOLD THE NSTAR ENTITIES HARMLESS FROM ANY SUCH LOSS OR INJURY.

THE INFORMATION MAY NOT REPRESENT A SURVEY, MAY NOT BE THE MOST CURRENT, AND IS SUBJECT TO CHANGE WITHOUT NOTICE. NO LIABILITY IS ASSUMED FOR THE ACCURACY OF THE INFORMATION, EITHER EXPRESSED OR IMPLIED. UNAUTHORIZED ATTEMPTS TO MODIFY THE INFORMATION OR USE THE INFORMATION FOR OTHER THAN ITS INTENDED PURPOSES ARE PROHIBITED.

MASS. LAW

REQUIRES 72 HOURS ADVANCE NOTICE TO UTILITY COMPANIES BEFORE DIGGING BY ANYONE. CALL DIG-SAFE 1-888-344-7233

C#	
Ward #	
Work Order #	4483439
Surveyed by:	N/A
Research by:	N/A
Platted by:	TL
Proposed Structures:	TL
Approved:	T THIBAUT
P#	

NSTAR EVERSOURCE
ELECTRIC
d/b/a
1165 MASSACHUSETTS AVE. DORCHESTER, MASS. 02125

Plan of MIDDLE ROAD, WEST TISBURY

Showing PROPOSED POLE LOCATIONS

Scale 1"=30'
Date MAY 28, 2021
SHEET 10 of 10