

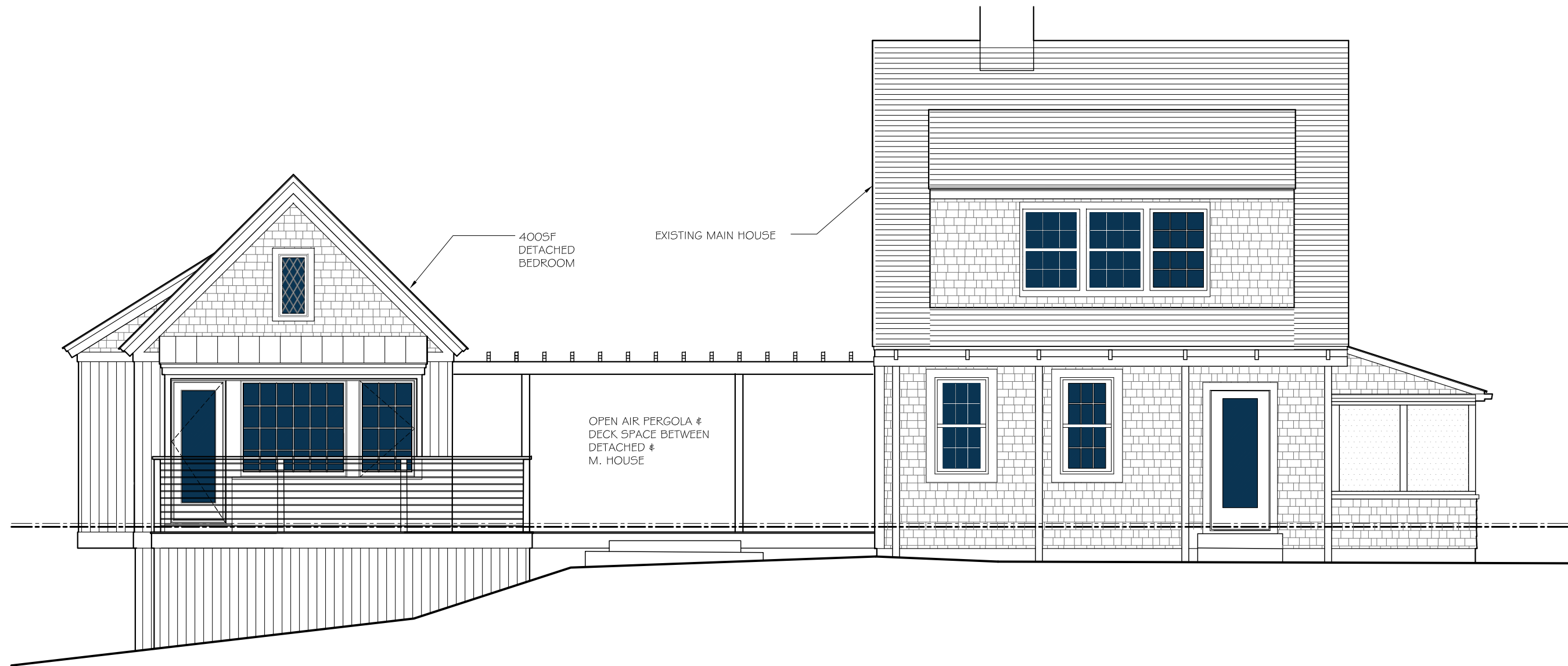




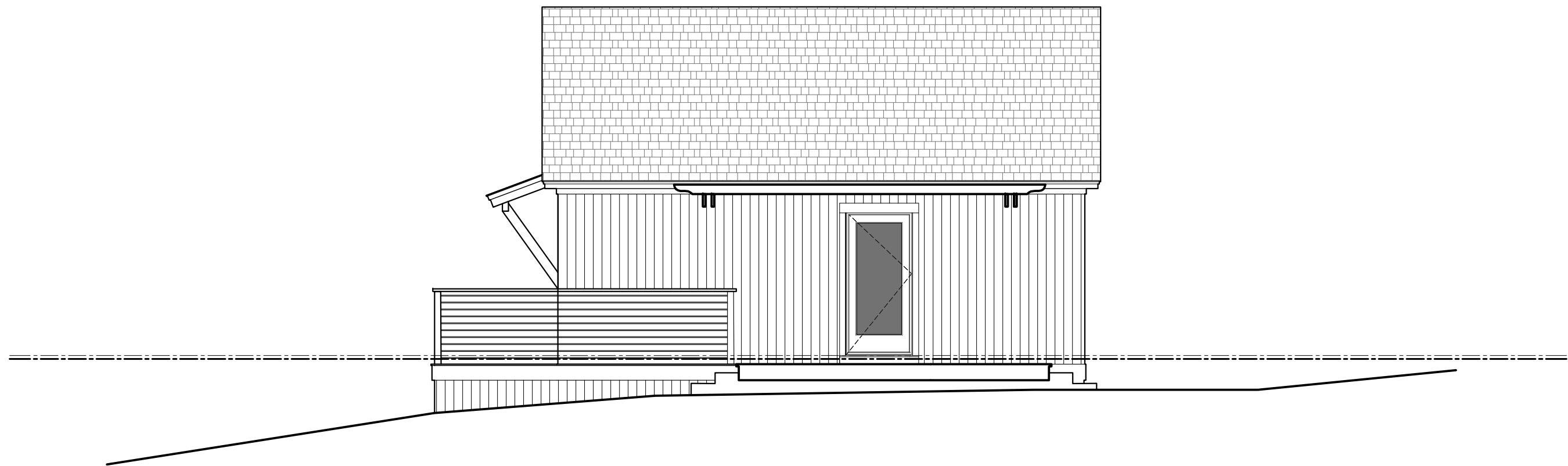
**1** PROPOSED FRONT (EAST) ELEVATION  
SCALE: 3/16"=1'-0"



2 PROPOSED SIDE (NORTH) ELEVATION  
SCALE: 3/16"=1'-0"



3 PROPOSED REAR (WEST) ELEVATION  
SCALE: 3/16"=1'-0"



4 PROPOSED SIDE (SOUTH - FACING MAIN HOUSE) ELEVATION  
SCALE: 3/16"=1'-0"