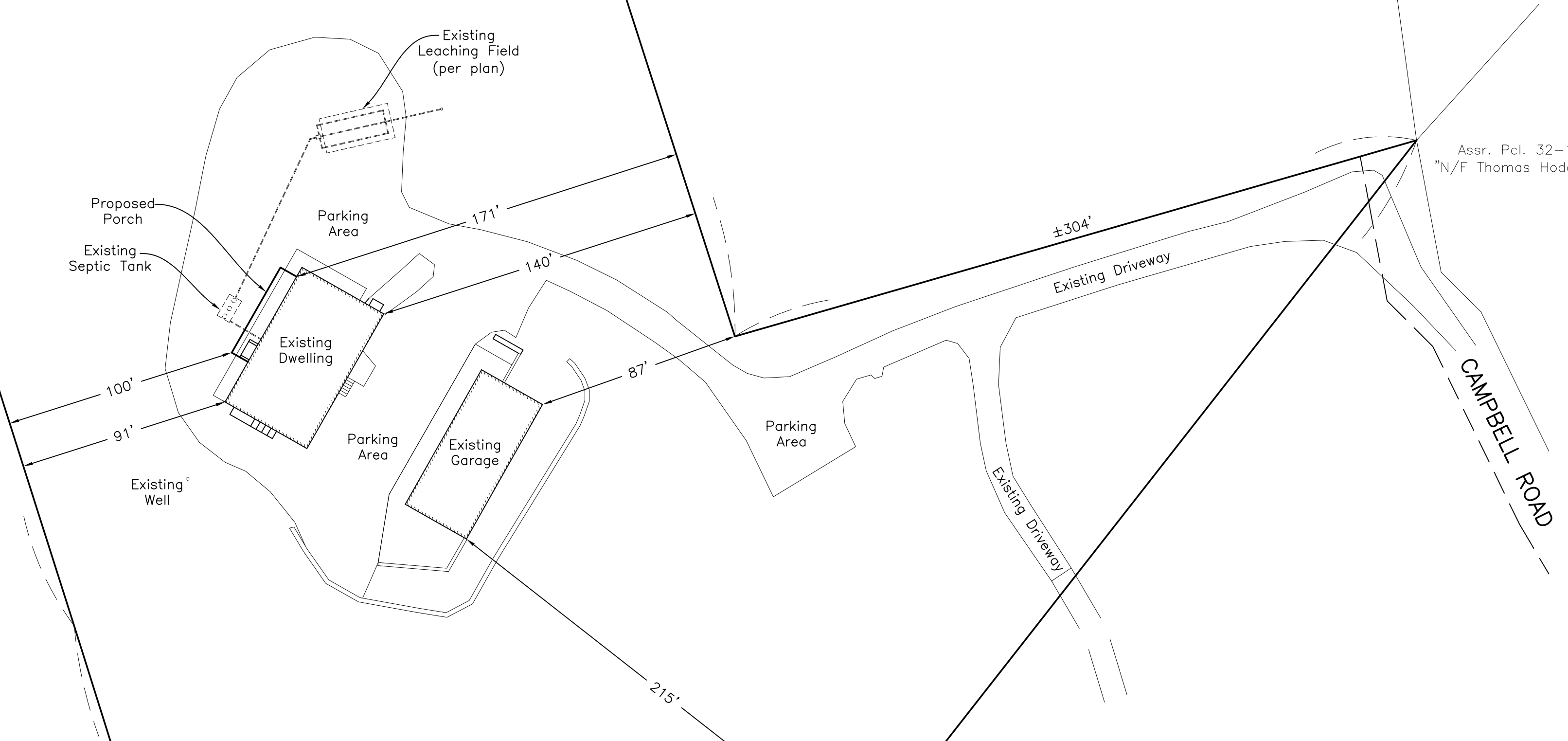


Reid G. Silva
August 25, 2023

Assr. Pcl. 32-6
"N/F Nancy Kirby Trustee"

#78 Campbell Road
Assr. Pcl. 32-5
Area = ±7.35 Acres



Assr. Pcl. 32-10
"N/F Thomas Hodgson"

Assr. Pcl. 32-4.2
"N/F Katharine Murphy Et. Al. Trustee"

Assr. Pcl. 32-114.2
"N/F Michael Post Trustee"

Assr. Pcl. 32-114
"N/F Michael & Paulo Black"

Assr. Pcl. 32-114.1
"N/F Paul Buckley Trustee"

Notes:
Zoning District: RU
Setbacks: 50' Front
50' Side/Rear
Minimum Lot Size= 3.0 acres
* Setbacks to be confirmed by town official

Site Plan in
West Tisbury, Mass.
Prepared for
Sheriff's Meadow Foundation
Scale 1" = 40'
August 23, 2023

VINEYARD
LAND SURVEYING
& ENGINEERING

12 Cournoyer Road
P.O. Box 421
West Tisbury, MA 02575
P 508-693-3774 F 508-629-0440
VLSE.net