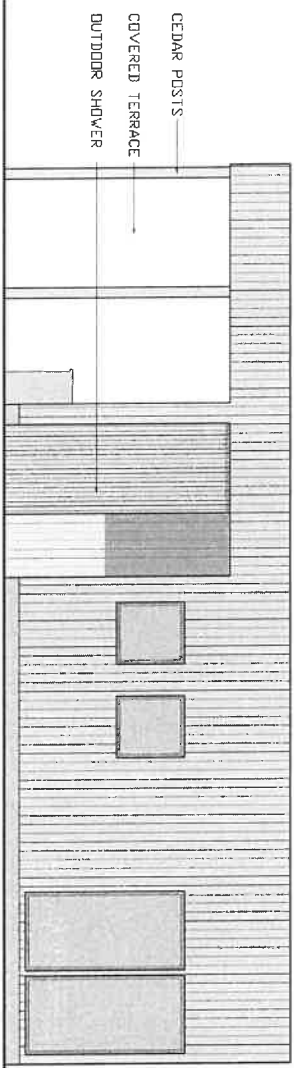


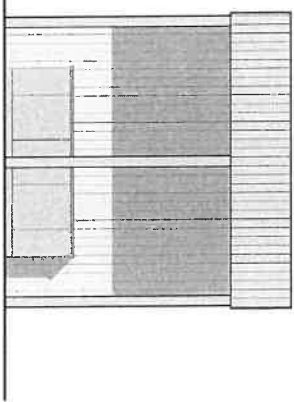
1 SOUTH ELEVATION
SCALE: 3/16" = 1'-0"

2 WEST ELEVATION
SCALE: 3/16" = 1'-0"

DOWNSPOUT
CEDAR VERTICAL
BOARDS



3 NORTH ELEVATION
SCALE: 3/16" = 1'-0"



4 EAST ELEVATION
SCALE: 3/16" = 1'-0"

