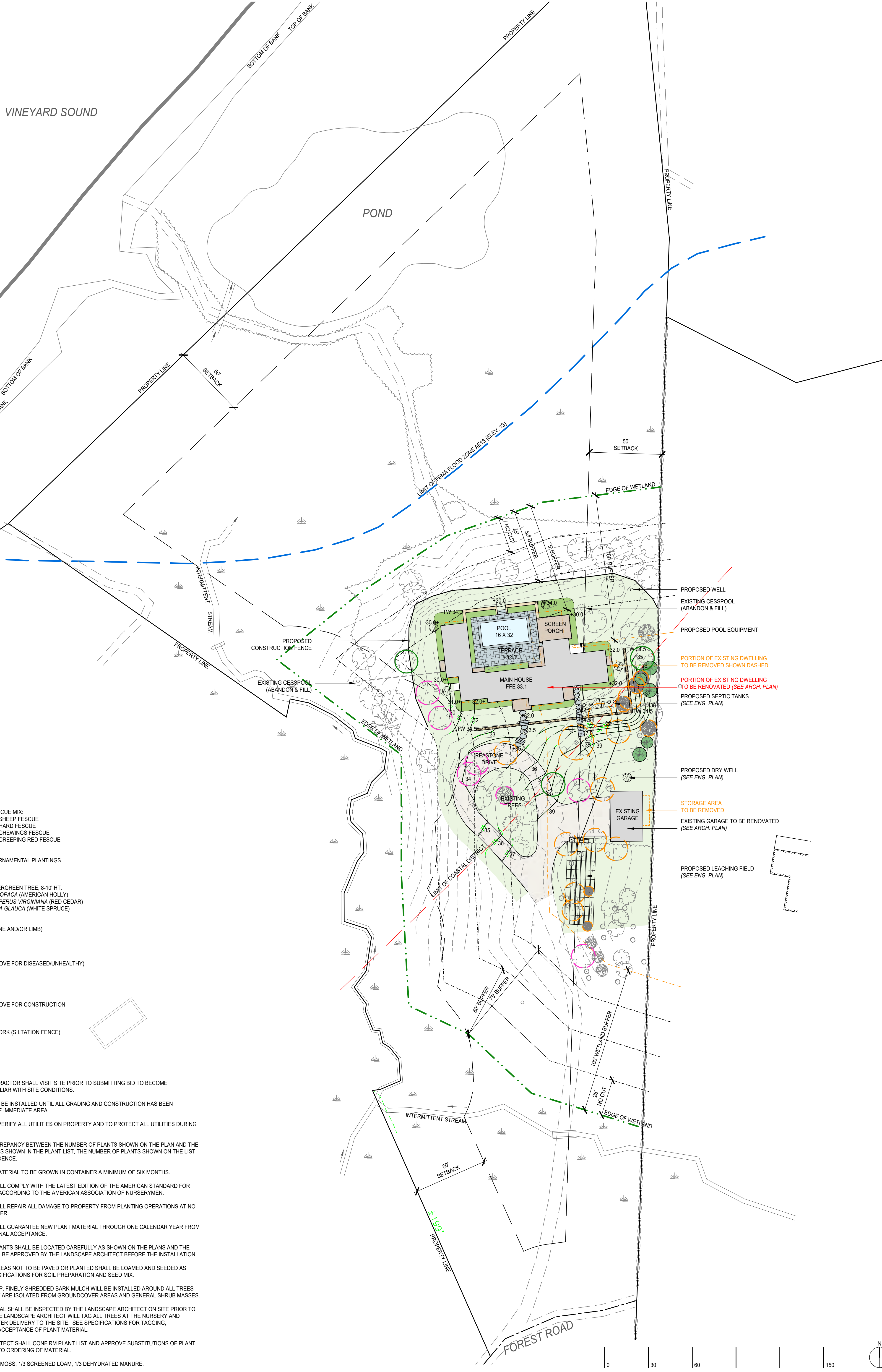


VINEYARD SOUND

POND



**PLANTING LEGEND**

- GRASS-FESCUE MIX:  
25% SHEEP FESCUE  
25% HARD FESCUE  
25% CHEWINGS FESCUE  
25% CREEPING RED FESCUE
- GARDEN-ORNAMENTAL PLANTINGS
- NATIVE EVERGREEN TREE, 8-10' HT.  
ILEX OPACA (AMERICAN HOLLY)  
JUNIPERUS VIRGINIANA (RED CEDAR)  
PICEA GLAUCA (WHITE SPRUCE)
- TREE (PRUNE AND/OR LIMB)
- TREE (REMOVE FOR DISEASED/UNHEALTHY)
- TREE (REMOVE FOR CONSTRUCTION)
- LIMIT OF WORK (SILTATION FENCE)

**PLANTING NOTES**

1. LANDSCAPE CONTRACTOR SHALL VISIT SITE PRIOR TO SUBMITTING BID TO BECOME COMPLETELY FAMILIAR WITH SITE CONDITIONS.
2. NO PLANTING WILL BE INSTALLED UNTIL ALL GRADING AND CONSTRUCTION HAS BEEN COMPLETED IN THE IMMEDIATE AREA.
3. CONTRACTOR TO VERIFY ALL UTILITIES ON PROPERTY AND TO PROTECT ALL UTILITIES DURING EXCAVATION.
4. IF THERE IS A DISCREPANCY BETWEEN THE NUMBER OF PLANTS SHOWN ON THE PLAN AND THE NUMBER OF PLANTS SHOWN IN THE PLANT LIST, THE NUMBER OF PLANTS SHOWN ON THE LIST WILL TAKE PRECEDENCE.
5. ALL CONTAINER MATERIAL TO BE GROWN IN CONTAINER A MINIMUM OF SIX MONTHS.
6. ALL MATERIAL SHALL COMPLY WITH THE LATEST EDITION OF THE AMERICAN STANDARD FOR NURSERY STOCK, ACCORDING TO THE AMERICAN ASSOCIATION OF NURSERYMEN.
7. CONTRACTOR SHALL REPAIR ALL DAMAGE TO PROPERTY FROM PLANTING OPERATIONS AT NO COST TO THE OWNER.
8. CONTRACTOR SHALL GUARANTEE NEW PLANT MATERIAL THROUGH ONE CALENDAR YEAR FROM TIME OF PROVISIONAL ACCEPTANCE.
9. ALL PROPOSED PLANTS SHALL BE LOCATED CAREFULLY AS SHOWN ON THE PLANS AND THE PLACEMENT SHALL BE APPROVED BY THE LANDSCAPE ARCHITECT BEFORE THE INSTALLATION.
10. ALL DISTURBED AREAS NOT TO BE PAVED OR PLANTED SHALL BE LOAMED AND SEEDED AS SHOWN. SEE SPECIFICATIONS FOR SOIL PREPARATION AND SEED MIX.
11. TWO INCH (2") DEEP, FINELY SHREDDED BARK MULCH WILL BE INSTALLED AROUND ALL TREES AND SHRUBS THAT ARE ISOLATED FROM GROUND COVER AREAS AND GENERAL SHRUB MASSES.
12. ALL PLANT MATERIAL SHALL BE INSPECTED BY THE LANDSCAPE ARCHITECT ON SITE PRIOR TO INSTALLATION. THE LANDSCAPE ARCHITECT WILL TAG ALL TREES AT THE NURSERY AND INSPECT THEM AFTER DELIVERY TO THE SITE. SEE SPECIFICATIONS FOR TAGGING, INSPECTION, AND ACCEPTANCE OF PLANT MATERIAL.
13. LANDSCAPE ARCHITECT SHALL CONFIRM PLANT LIST AND APPROVE SUBSTITUTIONS OF PLANT VARIETIES PRIOR TO ORDERING OF MATERIAL.
14. SOIL MIX: 1/3 PEAT MOSS, 1/3 SCREENED LOAM, 1/3 DEHYDRATED MANURE.

**TEAGUE RESIDENCE**

FOREST ROAD  
WEST TISBURY, MA

PROJECT NUMBER: 2311  
DRAWN BY: JC  
CHECKED BY: KMH  
SCALE: 1"=30'-0"  
DATE: 12.21.23

LANDSCAPE PLAN

HORIUCHI SOLIEN INC.  
P.O. BOX 914  
200 MAIN STREET  
FALMOUTH MA  
02541

508 540-5320  
FAX 508 540-8651  
info@horiuchisolien.com

**HORIUCHI SOLIEN**  
LANDSCAPE ARCHITECTS





HORIUCHI SOLIEN INC.  
 P.O. BOX 914  
 200 MAIN STREET  
 FALMOUTH MA  
 02541  
 508 540-5320  
 FAX 508 540-8651  
 info@horiuchisolien.com

**HORIUCHI SOLIEN**  
 LANDSCAPE ARCHITECTS

**ARCHITECT**  
 SULLIVAN + ASSOCIATES ARCHITECTS  
 52 NARRAGANSETT AVENUE  
 PO BOX 989  
 OAK BLUFFS, MA  
 508-693-0500

**CIVIL ENGINEER**  
 VINEYARD LAND SURVEYING & ENGINEERING INC  
 12 COURNOYER ROAD  
 PO BOX 421  
 WEST TISBURY, MA  
 508-693-3774

**TEAGUE  
 RESIDENCE**  
 48 FOREST ROAD  
 WEST TISBURY, MA

PROJECT NUMBER: 2311  
 DRAWN BY: EH  
 CHECKED BY: KMH  
 SCALE: 1"=10'  
 DATE: 12.21.23  
 REVIEW: 12.21.23

LANDSCAPE PLAN

