



SOUTHEAST ELEVATION

$\frac{1}{8}'' = 1'-0''$

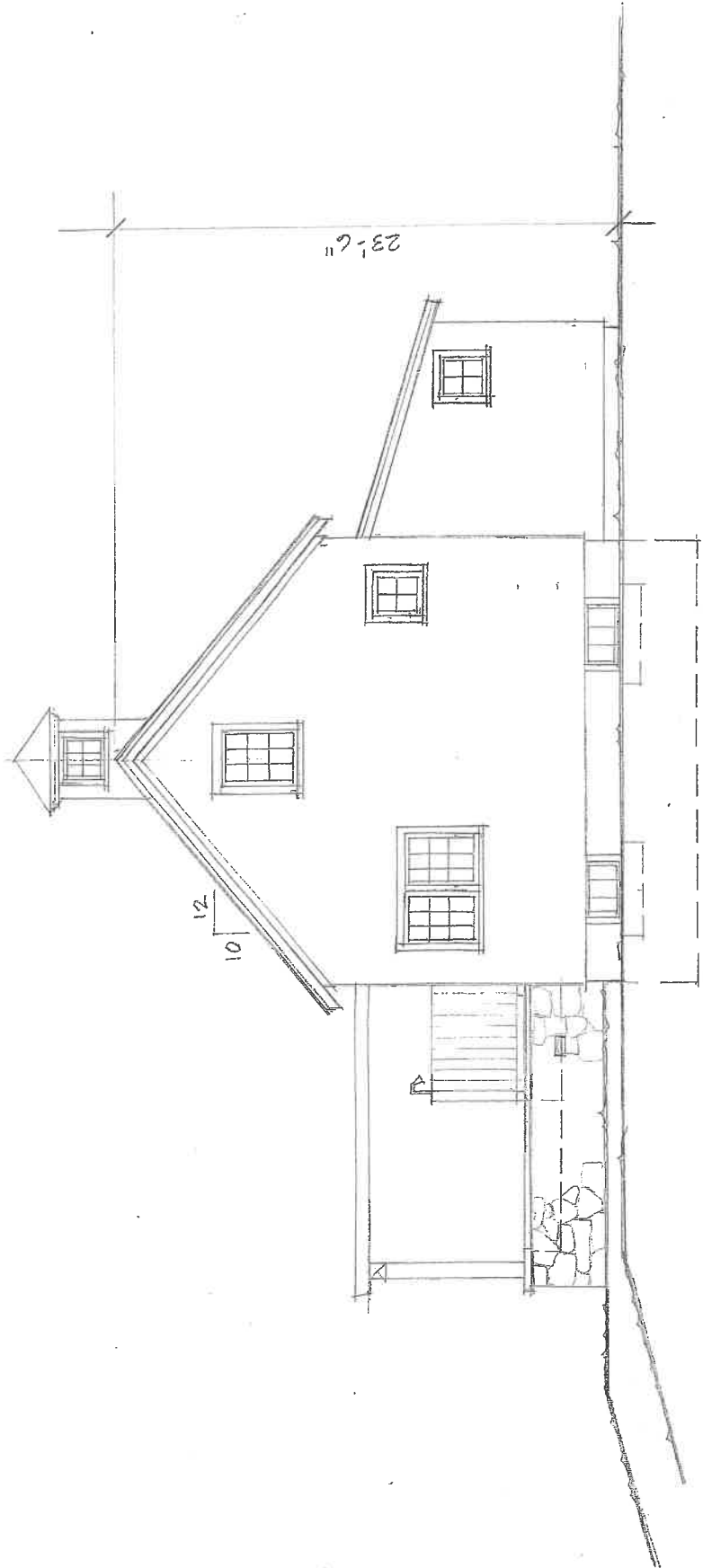


NORTHWEST ELEVATION

$\frac{1}{8}'' = 1'-0''$

SWEET

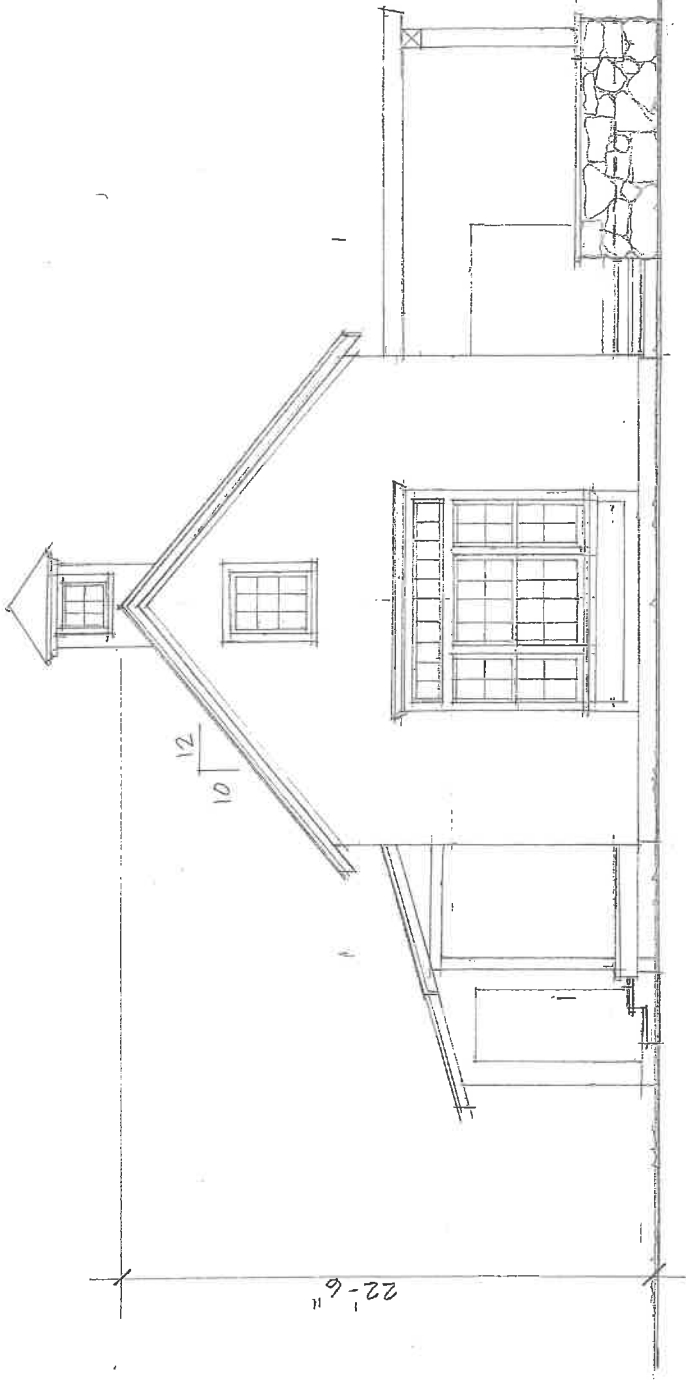
11.14.20



NORTHEAST ELEVATION

$\frac{1}{8}'' = 1'-0''$

SHEET  
WEST TISBURY  
11.14.20



SOUTHWEST ELEVATION -  
 $\frac{1}{8}'' = 1'-0''$

SWEET  
WEST TISBURY  
11.14.20