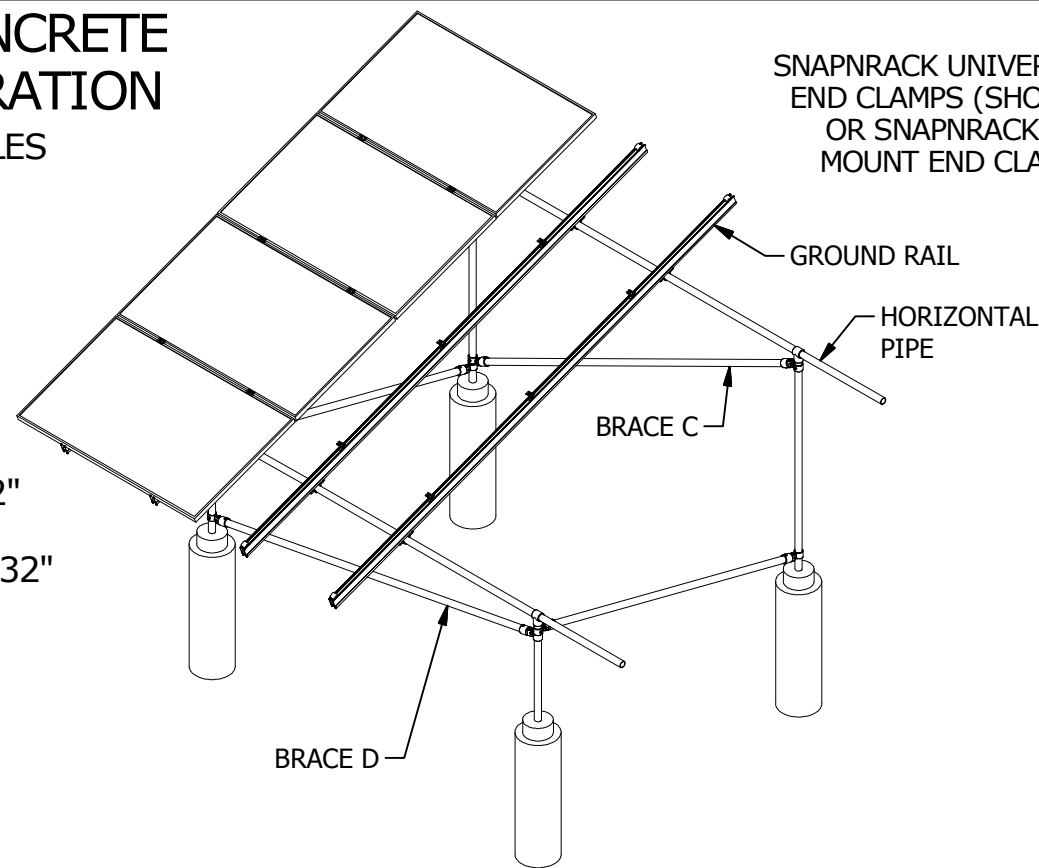


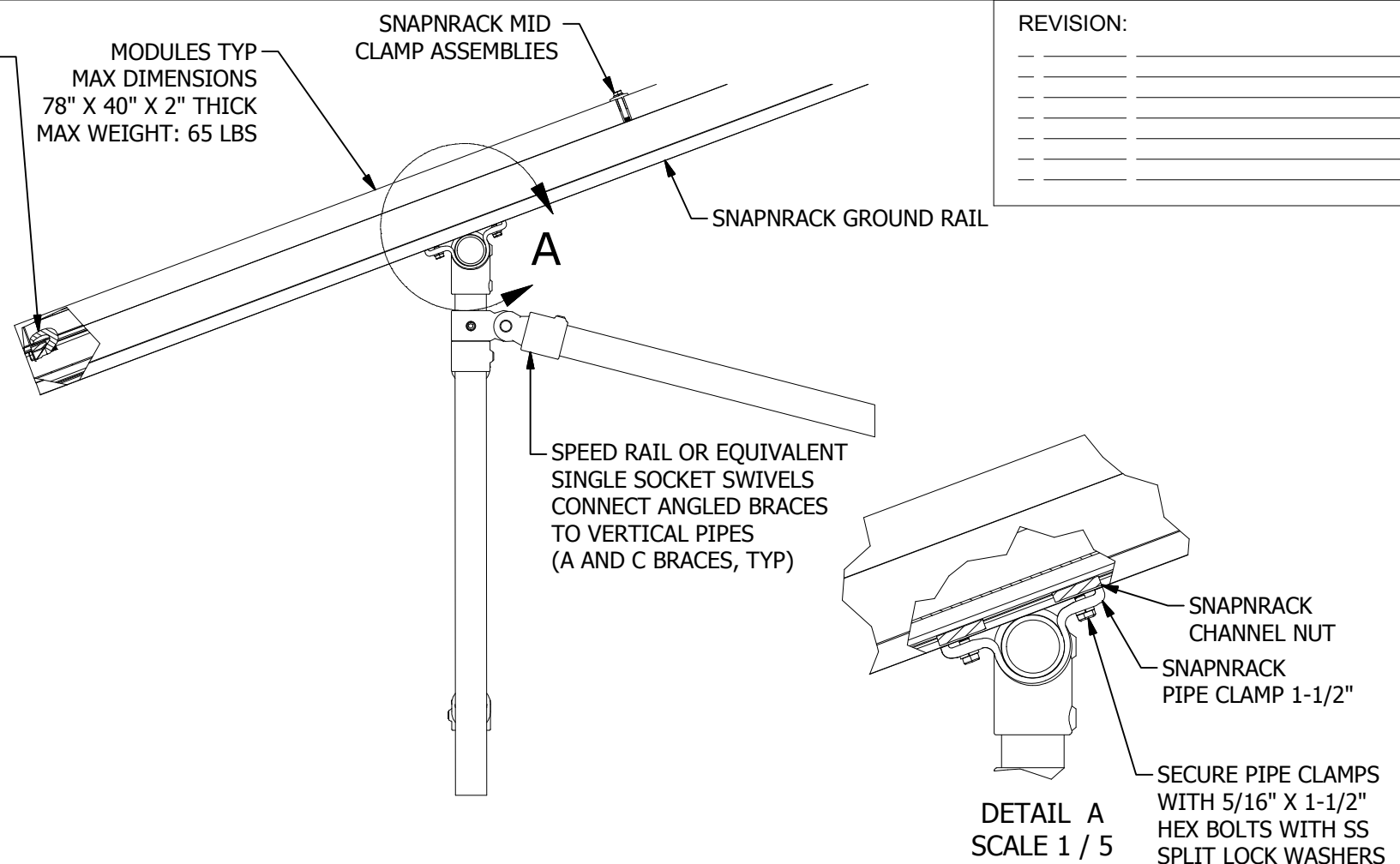
# STANDARD CONCRETE PIER CONFIGURATION

SEE ENGINEERING TABLES FOR PIER DEPTHS AND SPAN LIMITATIONS.

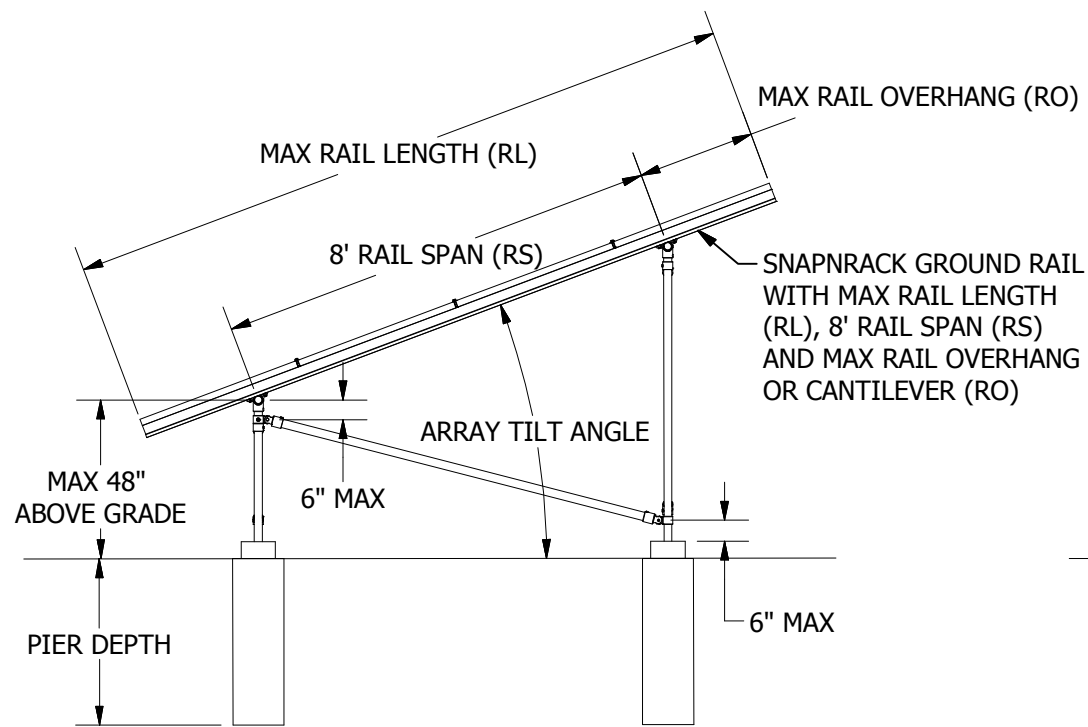
UNLESS OTHERWISE SPECIFIED IN ENGINEERING DOCS, THE FOLLOWING VALUES APPLY:  
 MAX RAIL LENGTH: 162"  
 RAIL SPAN: 96"  
 MAX RAIL OVERHANG: 32"



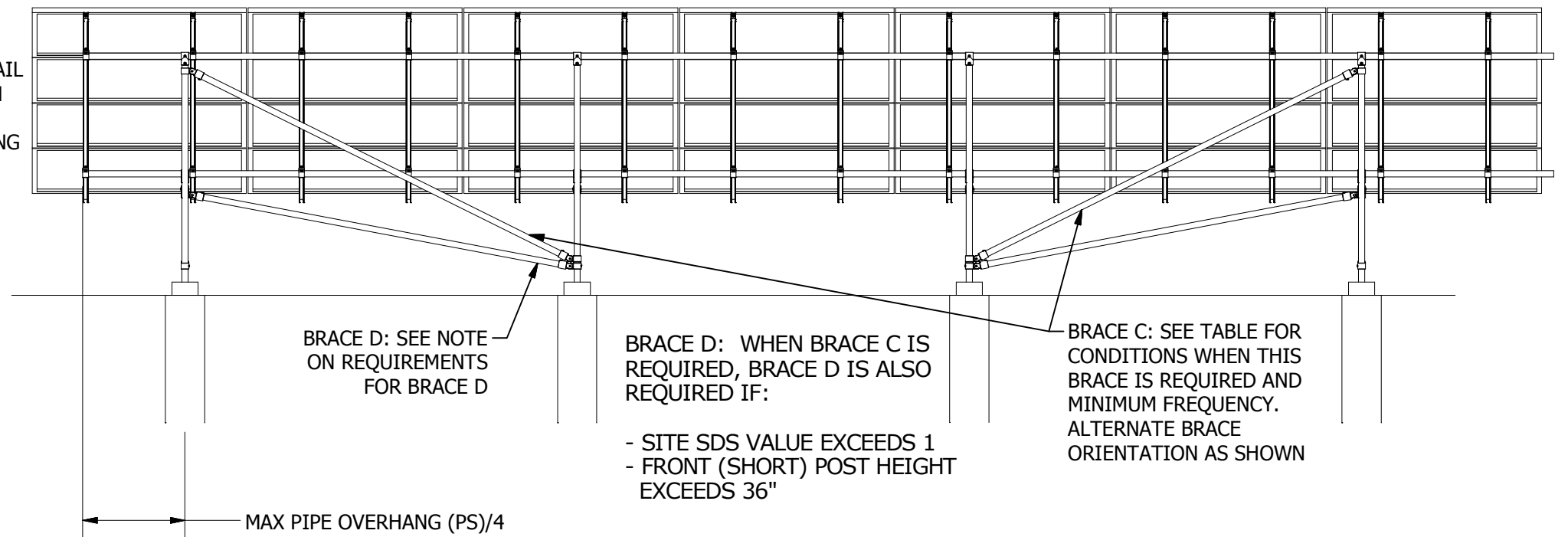
ISO VIEW OF RACKING ASSEMBLY



DETAILED VIEW OF PIPE TO RAIL AND BRACING INTERFACE



ARRAY SIDE VIEW



ARRAY BACK VIEW

REVISION:




MAINSTREAM ENERGY CORP.  
 775 FIERO LANE, SUITE 200 • SAN LUIS OBISPO, CA 93401 USA  
 PHONE (805) 528-9705 • FAX (805) 528-9701

DESIGNER: G McPheeters  
 DRAFTER: D Ryan  
 APPROVED BY: \_\_\_\_\_

SCALE: DNS  
 DATE: 120113

PART NUMBER: S200 D01

DESCRIPTION: SERIES 200 OVERVIEW

REV G

THE INFORMATION IN THIS DRAWING IS CONFIDENTIAL AND PROPRIETARY. ANY REPRODUCTION, DISCLOSURE, OR USE THEREOF IS PROHIBITED WITHOUT THE WRITTEN CONSENT OF MAINSTREAM ENERGY CORPORATION.