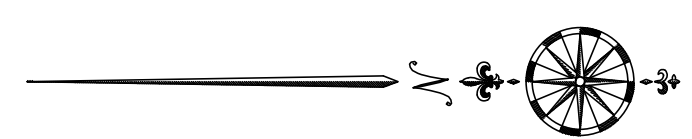


1 PROPOSED SITE PLAN
1/32" = 1'-0"



ISSUED FOR PERMIT
NOVEMBER 20, 2020

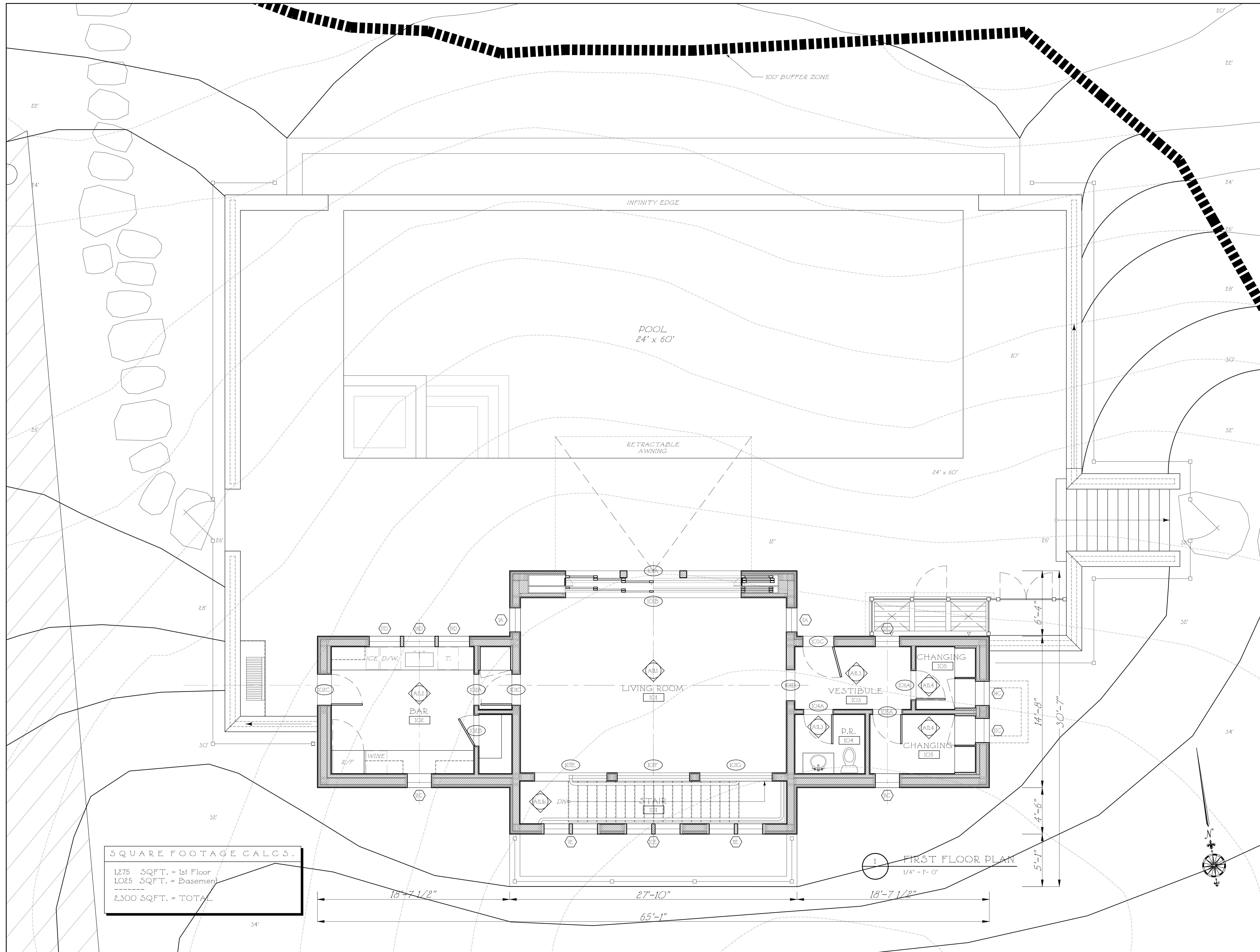
A COTTAGE & POOL HOUSE AT
WINDSONG
WEST TISBURY, MA

SHEET TITLE:
PROPOSED
SITE PLAN

DATE: 11/20/20	SHEET NUMBER: A0.1
SCALE: 1/32" = 1'-0"	
DRAWN BY: AA, NM	

THE OFFICE OF
FERGUSON & SHAMAMIAN
ARCHITECTS, LLP
270 LAFAYETTE STREET, NEW YORK, NEW YORK 10012
TELEPHONE: 212-941-8088
TELEFAX: 212-941-8089

© COPYRIGHT 2020 BY FERGUSON & SHAMAMIAN ARCHITECTS, LLP



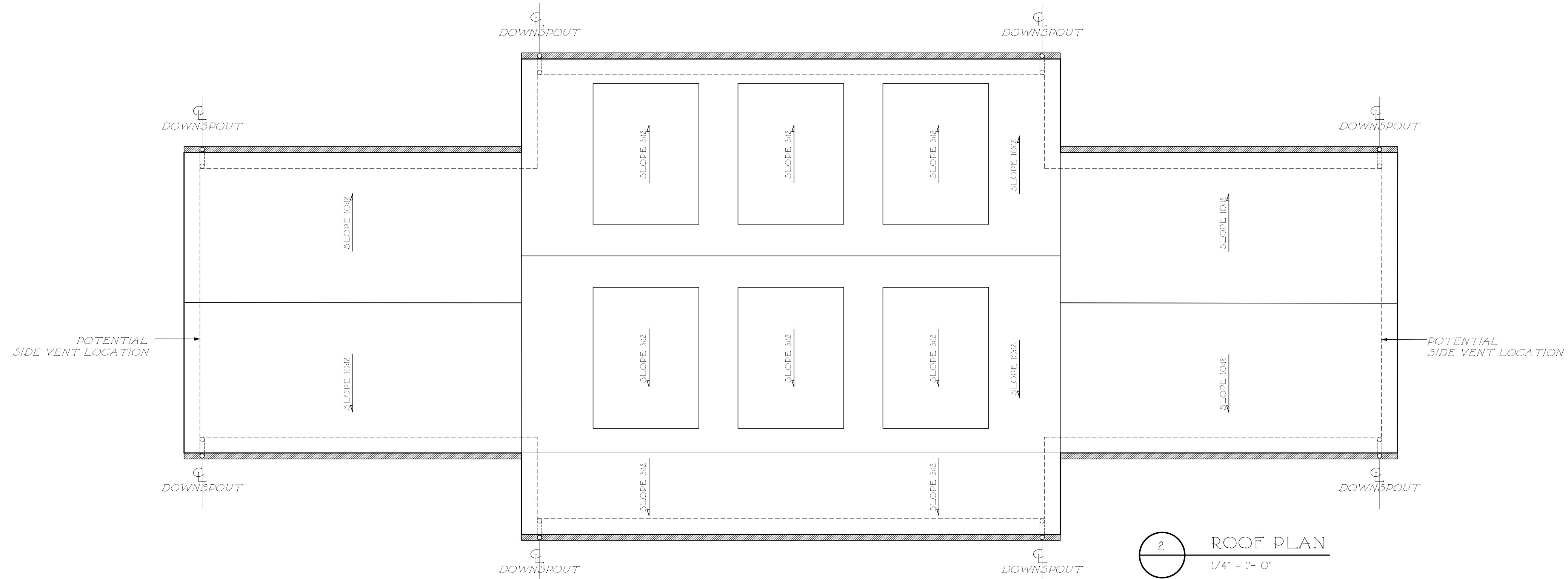
SQUARE FOOTAGE CALCS.
 1,275 SQFT. = 1st Floor
 1,025 SQFT. = Basement

 2,300 SQFT. = TOTAL

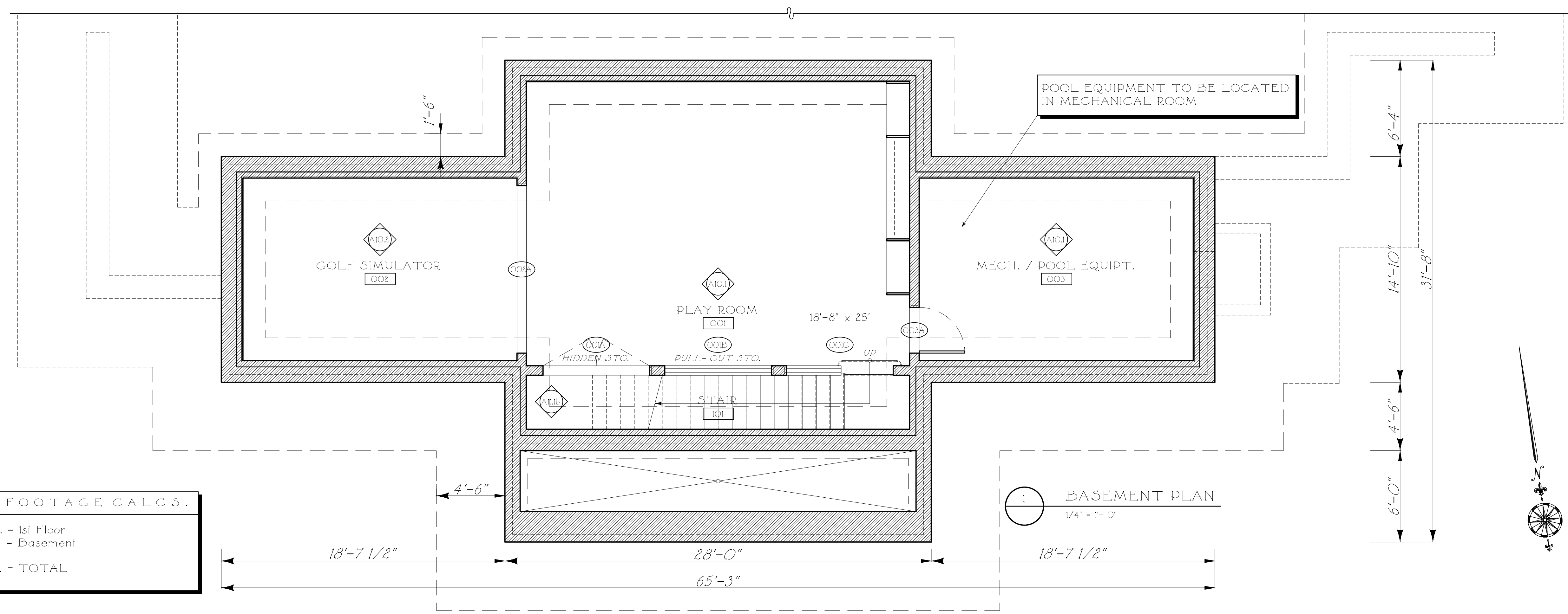
1 FIRST FLOOR PLAN
 1/4" = 1'-0"

ISSUED FOR PERMIT NOVEMBER 20, 2020	
A POOL HOUSE AT WINDSONG WEST TISBURY, MA	
SHEET TITLE: FIRST FLOOR PLAN	
DATE: 11/20/20	SHEET NUMBER: A1.1
SCALE: 1/4" = 1'-0"	
DRAWN BY: AA, NM	
THE OFFICE OF FERGUSON & SHAMAMIAN ARCHITECTS, LLP 270 LAFAYETTE STREET, NEW YORK, NEW YORK 10012 TELEPHONE: 212-941-8088 TELEFAX: 212-941-8089	





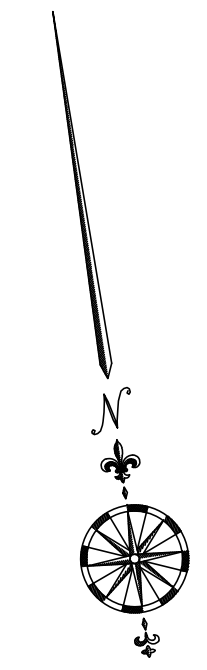
2 ROOF PLAN
1/4" = 1'-0"



1 BASEMENT PLAN
1/4" = 1'-0"

SQUARE FOOTAGE CALCS.
 1,275 SQFT. = 1st Floor
 1,025 SQFT. = Basement

 2,300 SQFT. = TOTAL



ISSUED FOR PERMIT
NOVEMBER 20, 2020

A POOL HOUSE AT
WINDSONG
WEST TISBURY, MA

SHEET TITLE:
BASEMENT &
ROOF PLAN

DATE:
11/20/20

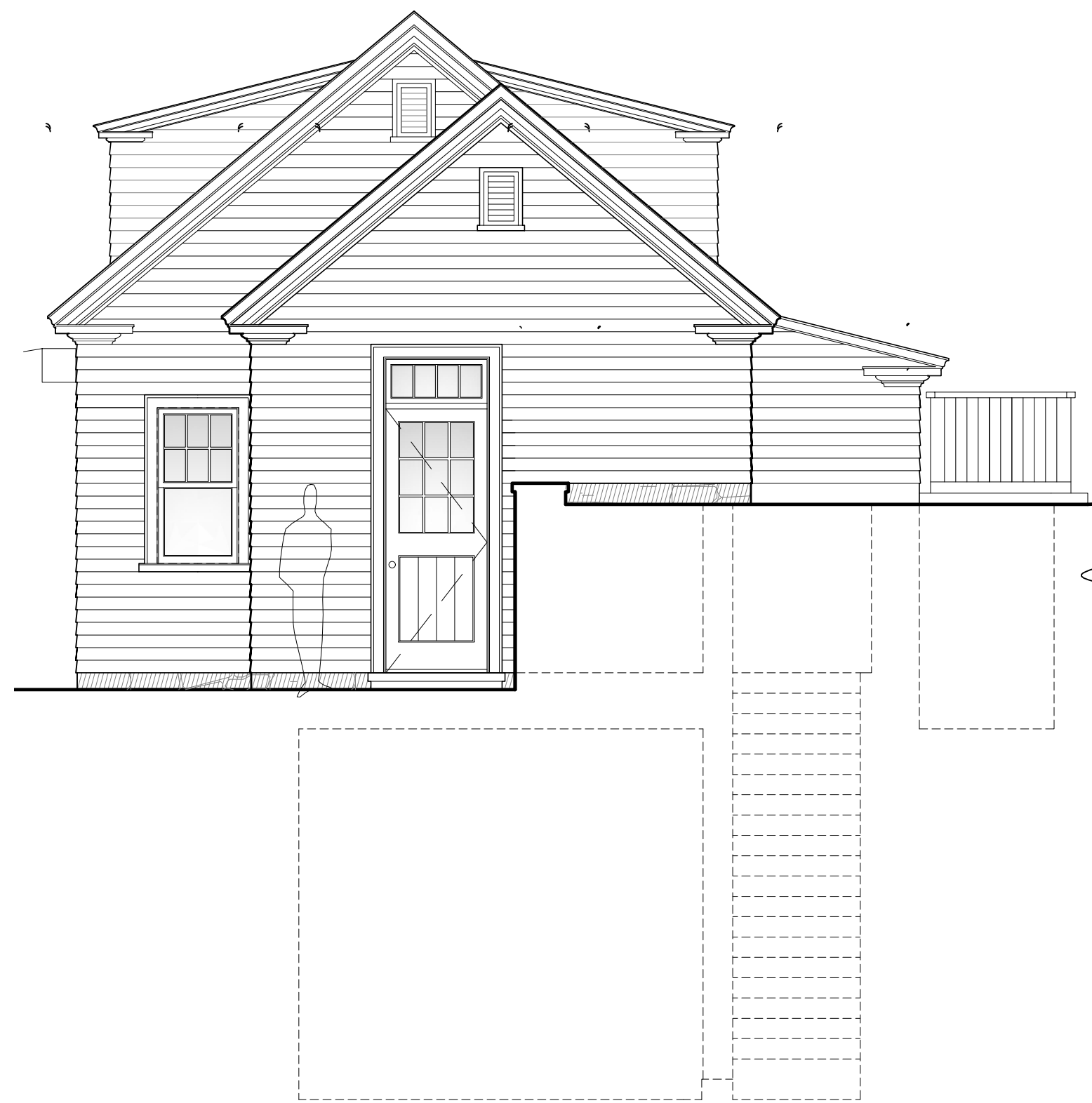
SHEET NUMBER:

SCALE:
1/4" = 1'-0"

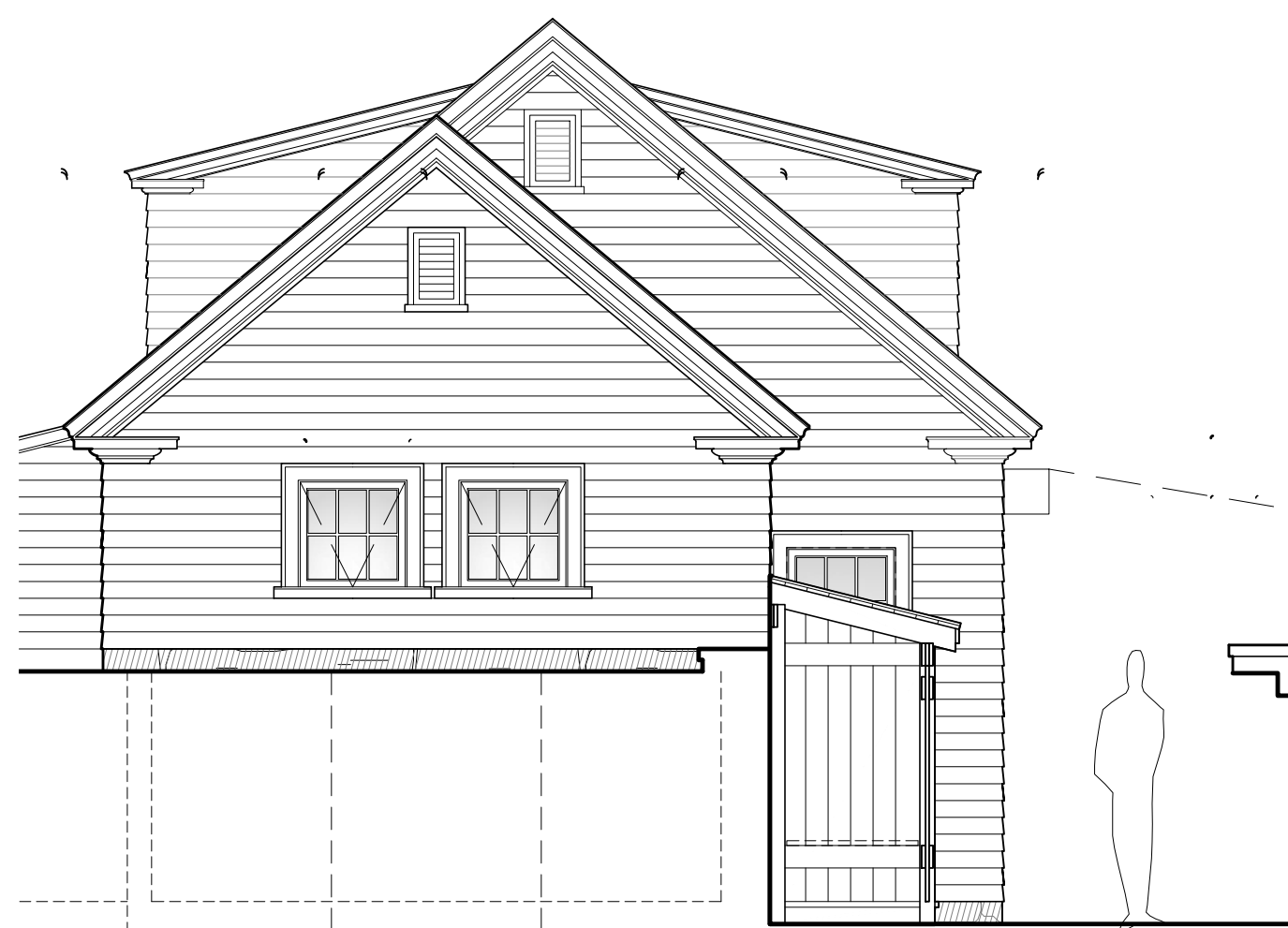
A1.2

DRAWN BY:
AA, NM

THE OFFICE OF
FERGUSON & SHAMAMIAN
ARCHITECTS, LLP
270 LAFAYETTE STREET, NEW YORK, NEW YORK 10012
TELEPHONE: 212-941-8088
TELEFAX: 212-941-8089



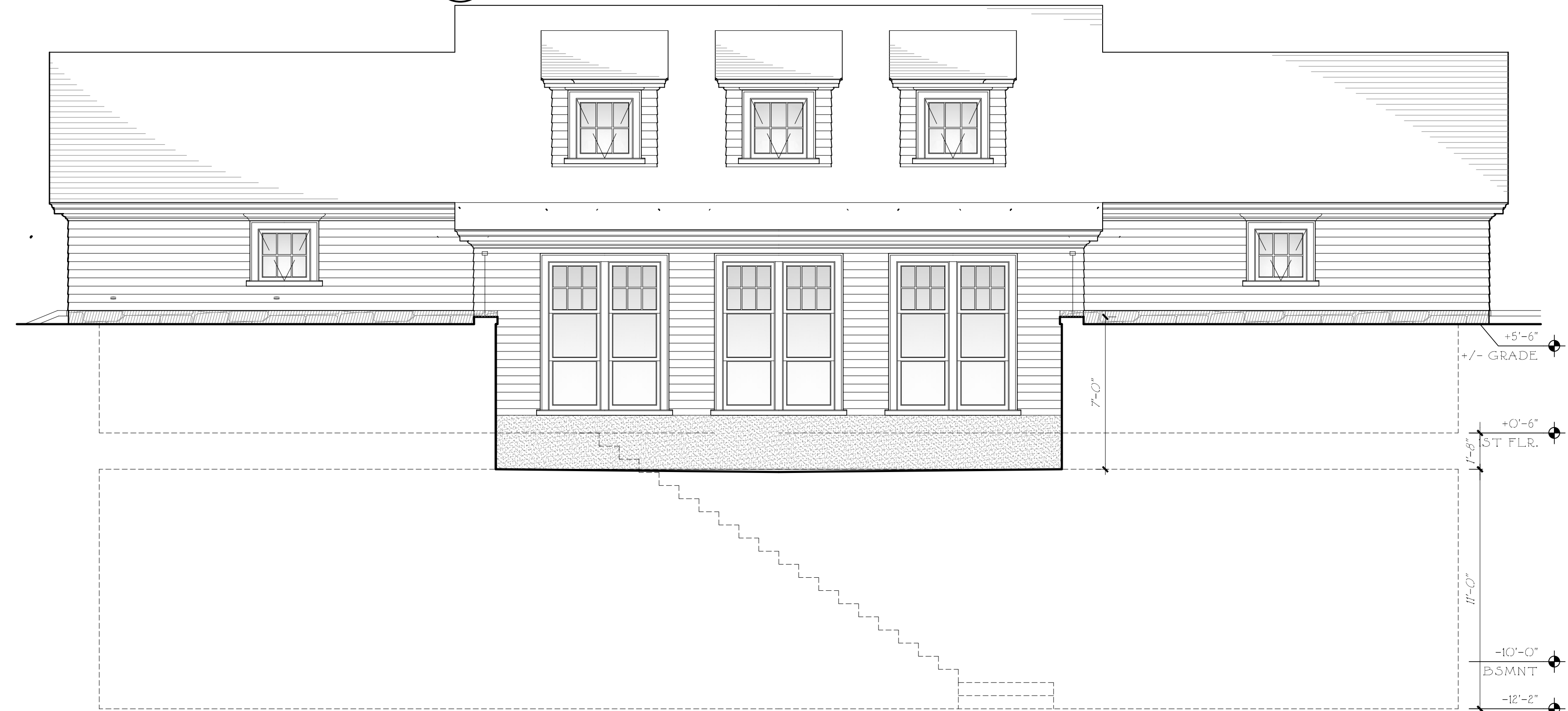
4 WEST ELEVATION
1/4" = 1'-0"



2 EAST ELEVATION
1/4" = 1'-0"



3a SOUTH ELEV. @ GRADE
1/4" = 1'-0"



3 SOUTH ELEVATION
1/4" = 1'-0"



1 NORTH ELEVATION
1/4" = 1'-0"

ISSUED FOR PERMIT NOVEMBER 20, 2020	
A POOL HOUSE AT WINDSONG WEST TISBURY, MA	
SHEET TITLE: EXTERIOR ELEVATIONS	
DATE: 11/20/20	SHEET NUMBER: A2.1
SCALE: 1/4" = 1'-0"	
DRAWN BY: AA, NM	
THE OFFICE OF FERGUSON & SHAMAMIAN ARCHITECTS, LLP 270 LAFAYETTE STREET, NEW YORK, NEW YORK 10012 TELEPHONE: 212-941-8088 TELEFAX: 212-941-8089	